

VIENNA

VIRGINIA

FEBRUARY 12, 1960*

ZONING MAP

EFFECTIVE JUNE 1, 1959

J. BARRY TROUT, MAYOR.
WILLIAM F. BETTWY, COUNCILMAN.
ALBERT M. BOTTOMS, COUNCILMAN.
JOHN W. CRADDOCK, COUNCILMAN.
PAUL H. HEUBUSCH, COUNCILMAN.
LOWELL D. WALLACE, COUNCILMAN.
GUY M. WILSON, COUNCILMAN.

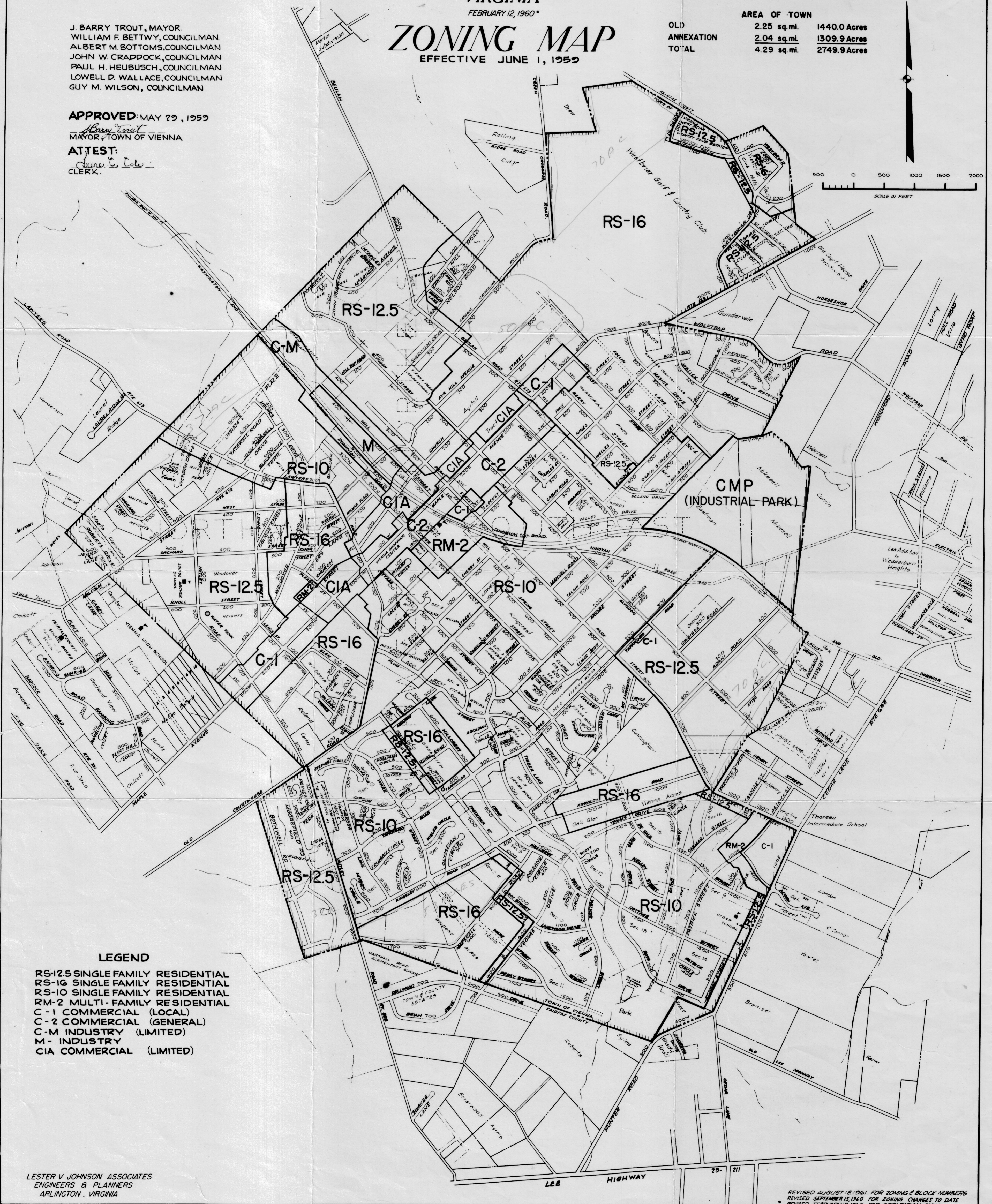
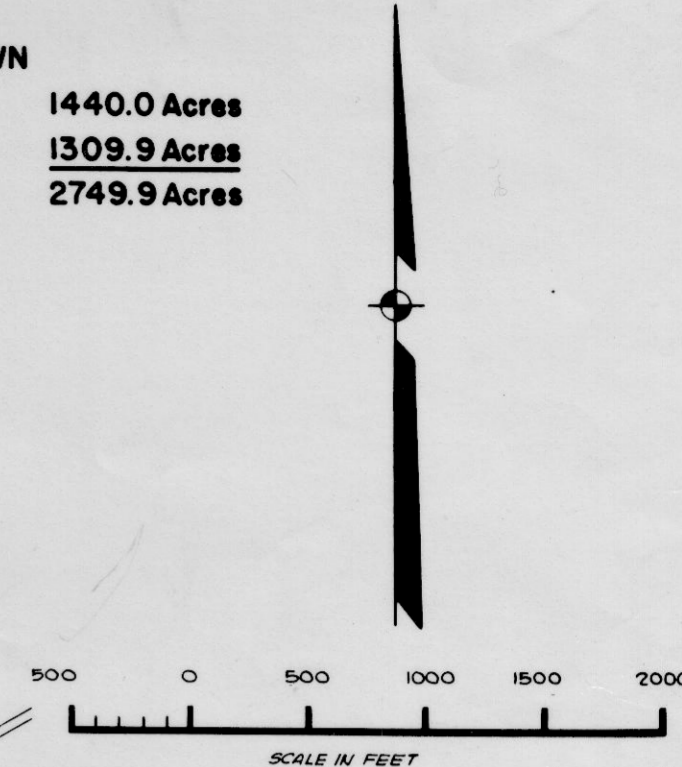
APPROVED: MAY 29, 1959

J. Barry Trout
MAYOR, TOWN OF VIENNA

ATTEST:

Gene C. Cole
CLERK.

	AREA OF TOWN	
OLD	2.25 sq. mi.	1440.0 Acres
ANNEXATION	2.04 sq. mi.	1309.9 Acres
TOTAL	4.29 sq. mi.	2749.9 Acres



LEGEND

- RS-12.5 SINGLE FAMILY RESIDENTIAL
- RS-16 SINGLE FAMILY RESIDENTIAL
- RS-10 SINGLE FAMILY RESIDENTIAL
- RM-2 MULTI-FAMILY RESIDENTIAL
- C-1 COMMERCIAL (LOCAL)
- C-2 COMMERCIAL (GENERAL)
- C-M INDUSTRY (LIMITED)
- M- INDUSTRY
- CIA COMMERCIAL (LIMITED)

LESTER V. JOHNSON ASSOCIATES
ENGINEERS & PLANNERS
ARLINGTON, VIRGINIA

REVISED AUGUST 18, 1961 FOR ZONING & BLOCK NUMBERS
REVISED SEPTEMBER 15, 1960 FOR ZONING CHANGES TO DATE
REVISED FEBRUARY 12, 1960 FOR ORIENTATION ONLY