



REVISIONS		
No.	Description	Date
	BID SET	04/08/98
	95% REVIEW	01/19/98
	TOWN REVIEW	12/08/97
	UTILITY REVIEW	9/30/97
	50% SUBMISSION	05/97

**HARDSCAPE  
DETAILS  
- PAVING**

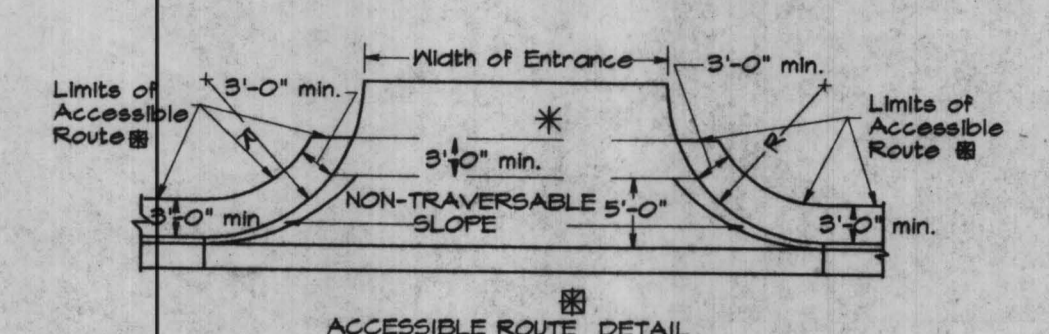
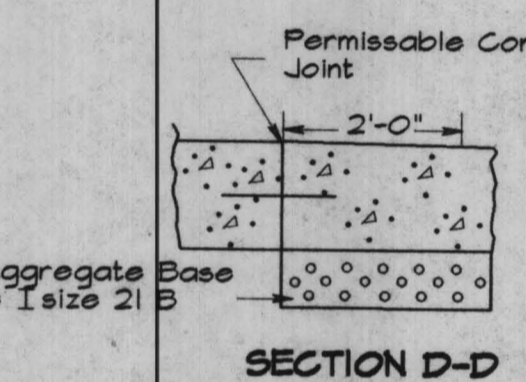
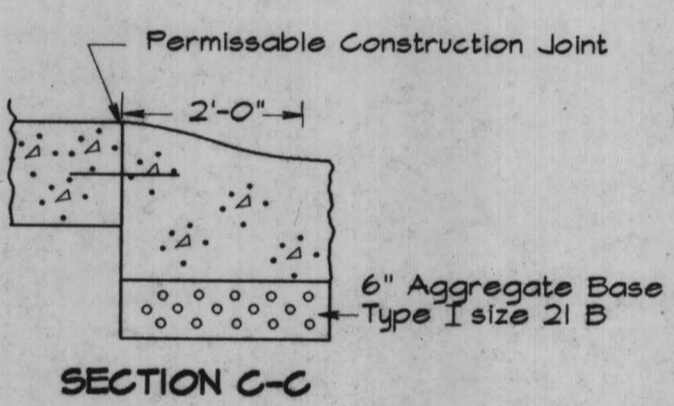
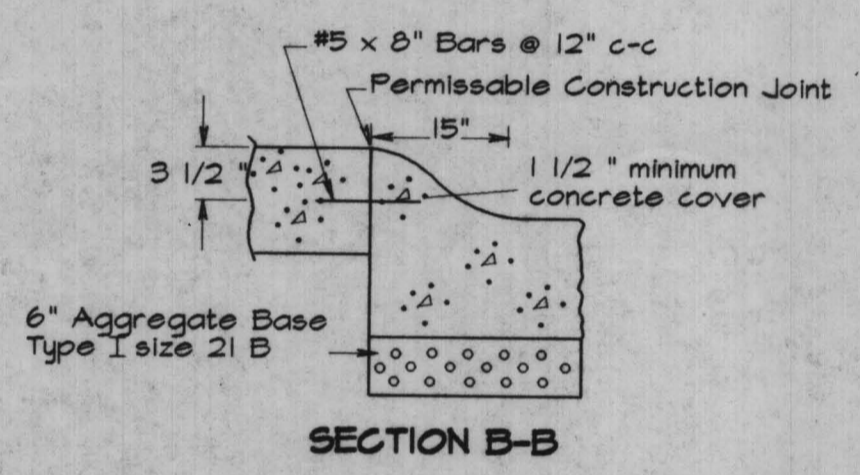
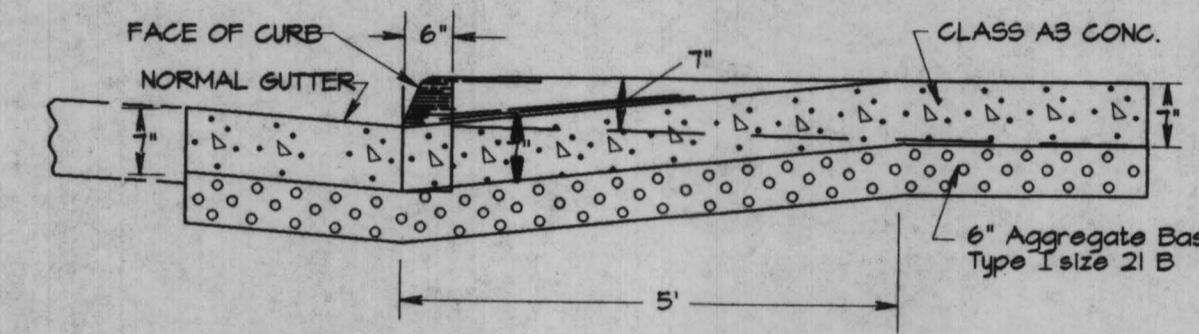
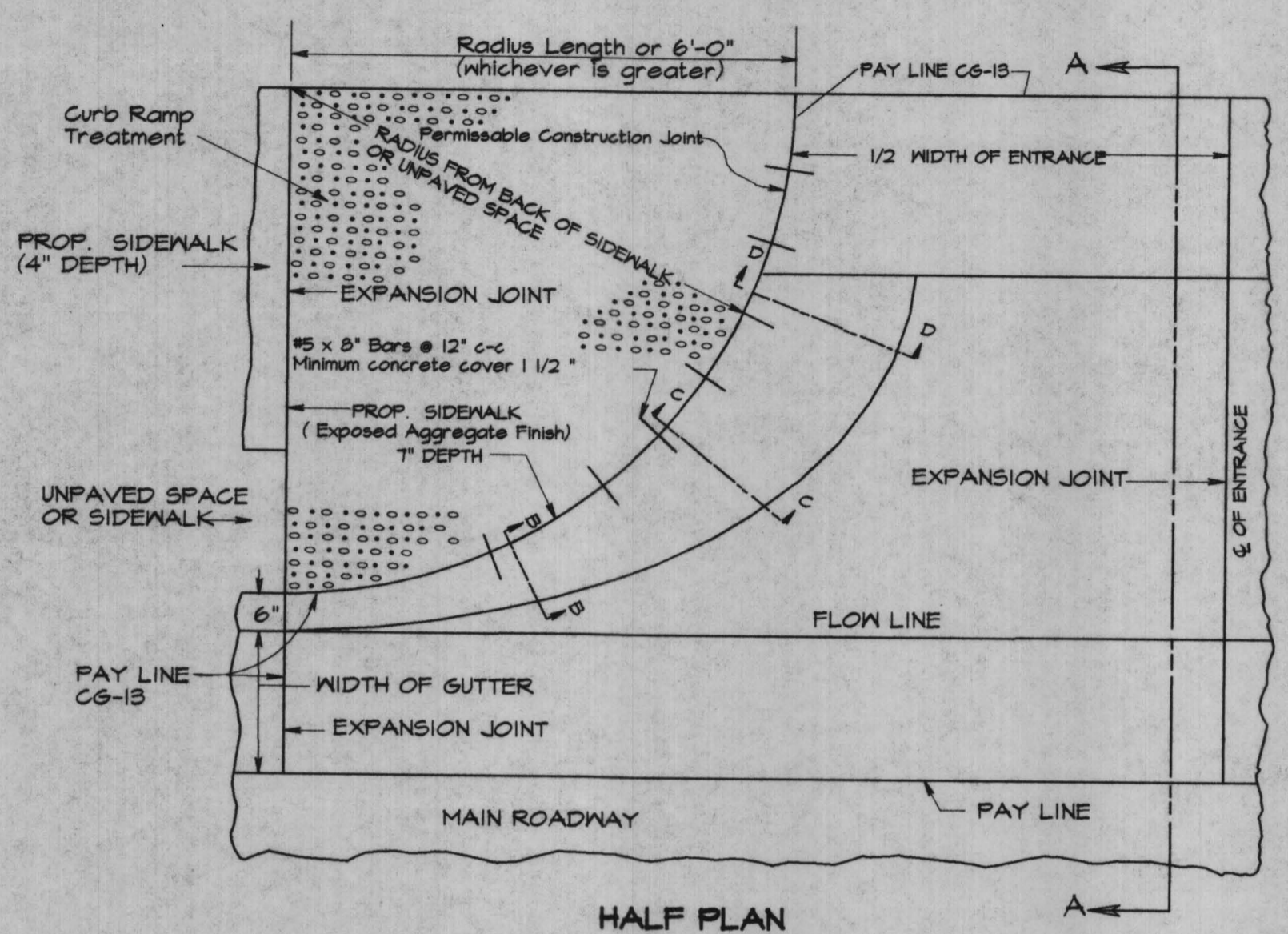
Drawing Title

Project Number LSG # 96051

Drawn By: LSG

Checked By: MG

Sheet No. L-14



Additional right-of-way is required if the limits of Accessible Route extend beyond existing or proposed VDOT Right-of-Way.

Detail to be used when the combined width of unpaved space and sidewalk space is less than 7'.

Accessible route is defined as a continuous unobstructed, stable, firm and slip resistant path connecting all accessible elements of a facility that can be approached, entered and used by persons with mobility impairments.

\* If accessible routes are being provided, a minimum 5' traversable width is required.

Prop. 7" Sidewalk is to be poured monolithically with Entrance or by using permissible construction joint with required bars.

Proposed 7" sidewalk to be class A-3 concrete with exposed aggregate finish.

Required bars are to be No. 5x8" placed 1' center to center along back of curb, mid-depth of sidewalk. Minimum Concrete cover 1 1/2".

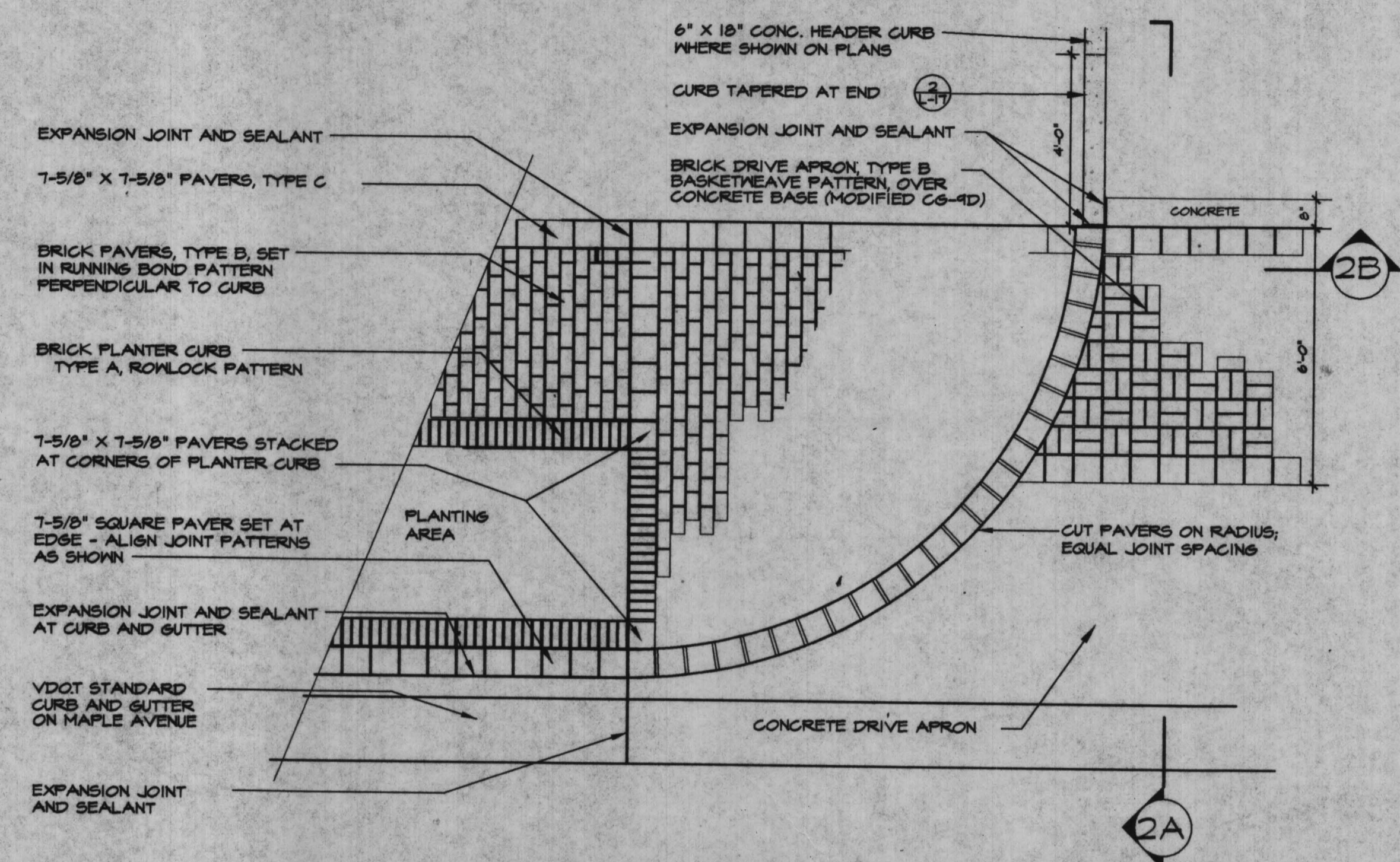
All details and dimensions not shown are the same as Standard CG-13.

This design may also be applied to other Entrance Standards as the need arises.

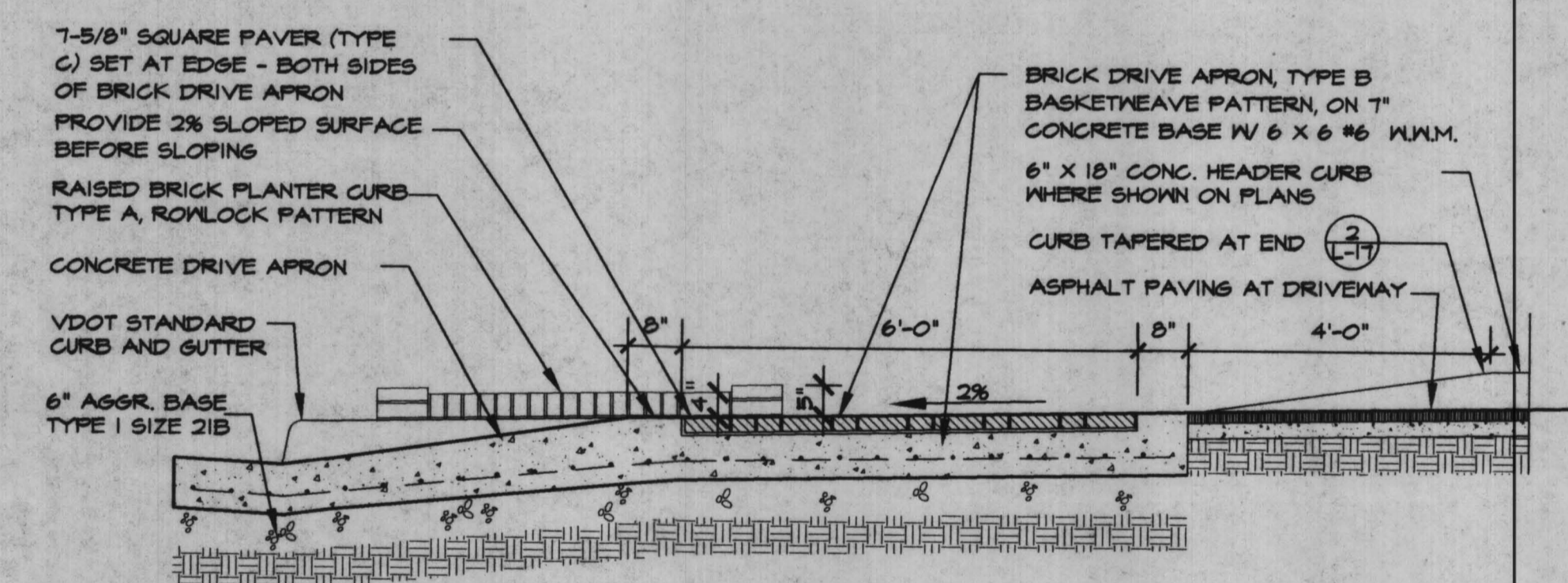
Limits of Exposed aggregate sidewalk for curb ramp treatment

When used in conjunction with Standard CG-3 or CG-7, the curb face on. This Standard is to be adjusted to match the mountable curb configuration.

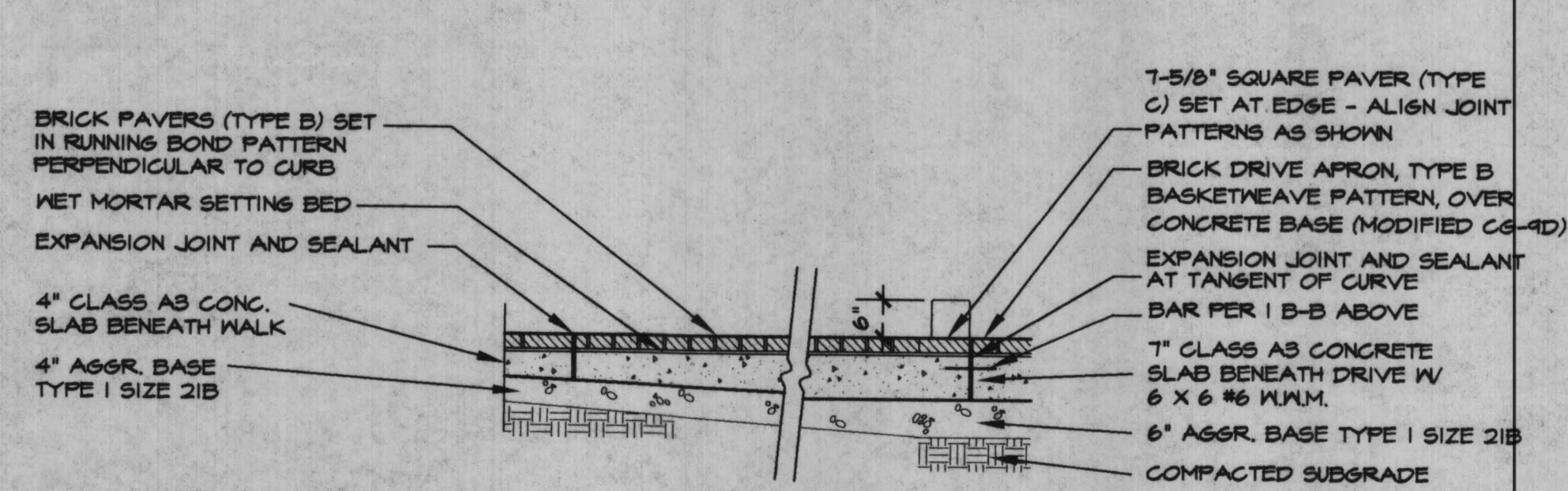
NOTE: CONSTRUCT MODIFIED CG-13 ENTRANCES WHERE SHOWN ON PLANS IN ACCORDANCE WITH STANDARD CG-13 DETAILS AND AS MODIFIED BELOW.



1 STANDARD CG-13 - FOR REFERENCE N.T.S.

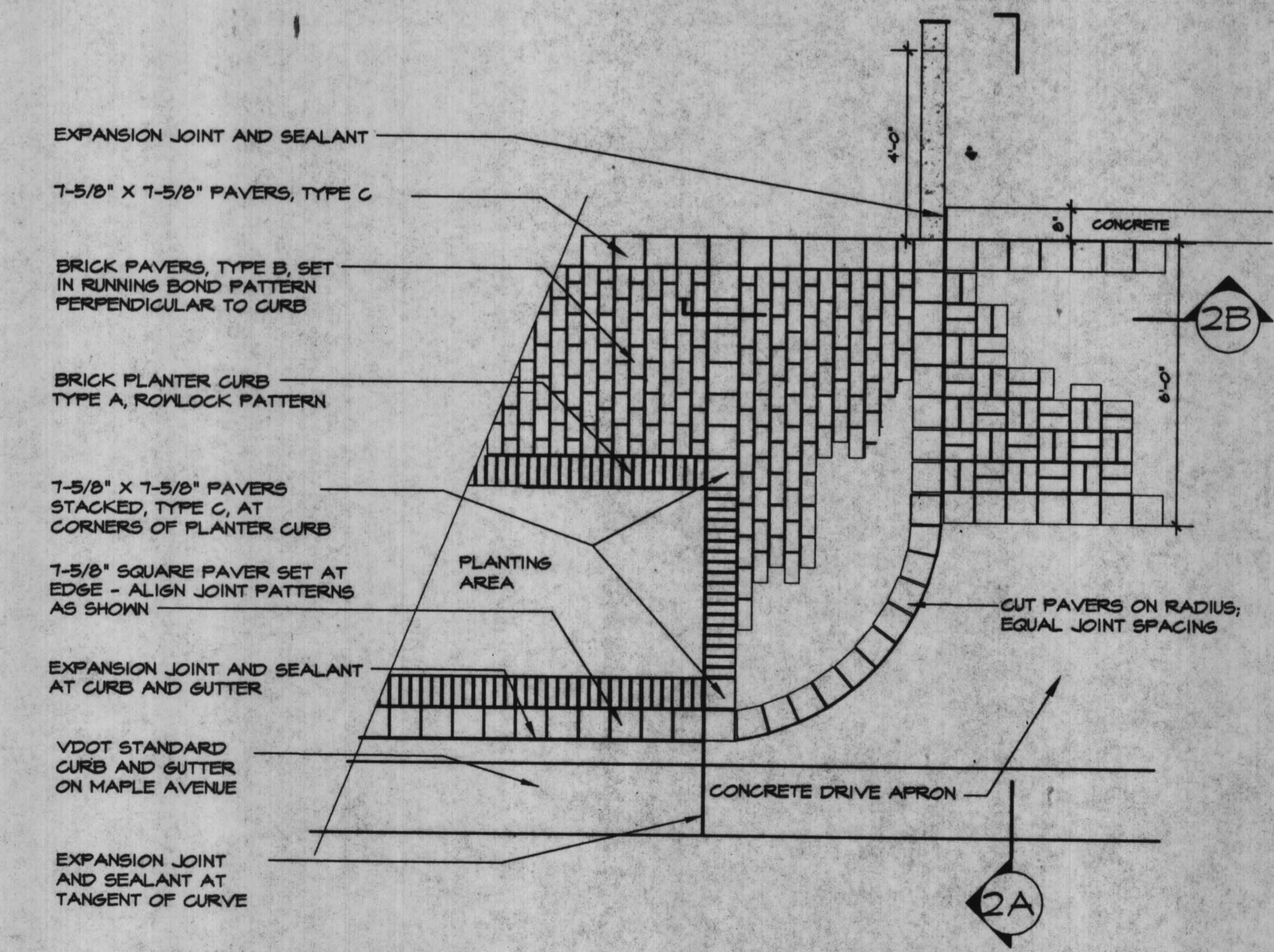


2A MODIFIED CG-13 (SECTION) 1/2" = 1'-0"



2B MODIFIED CG-13 (SECTION) 1/2" = 1'-0"

2 MODIFIED CG-13 - MAPLE AVE. & LAWYER RD. 3/8" = 1'-0"



3 COMMERCIAL DRIVE ENTRANCE 3/8" = 1'-0"







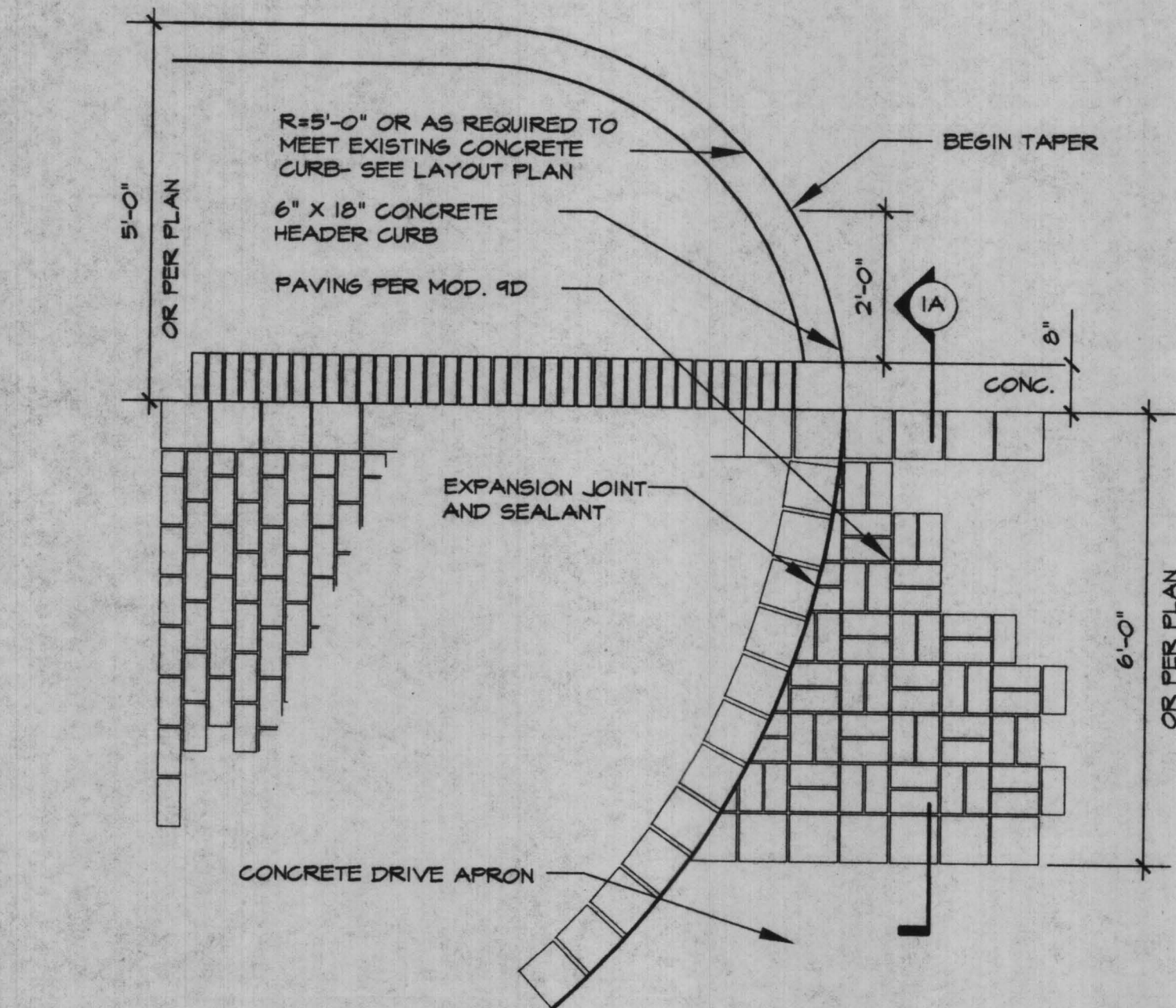
REVISIONS

No.	Description	Date
	BID SET	04/08/98
	96% REVIEW	01/19/98
	TOWN REVIEW	12/08/97
	UTILITY REVIEW	9/30/97
	50% SUBMISSION	05/97

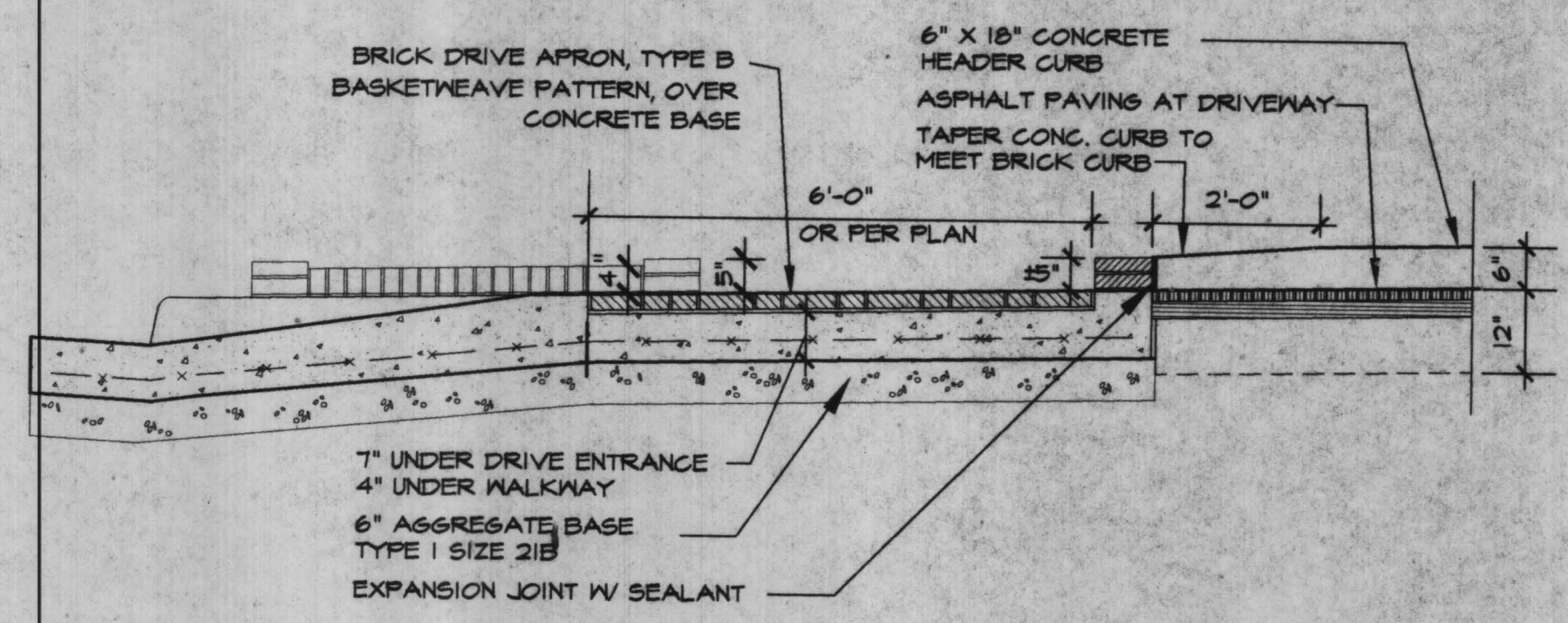
**HARDSCAPE  
DETAILS  
- PLANTER**

Drawing Title

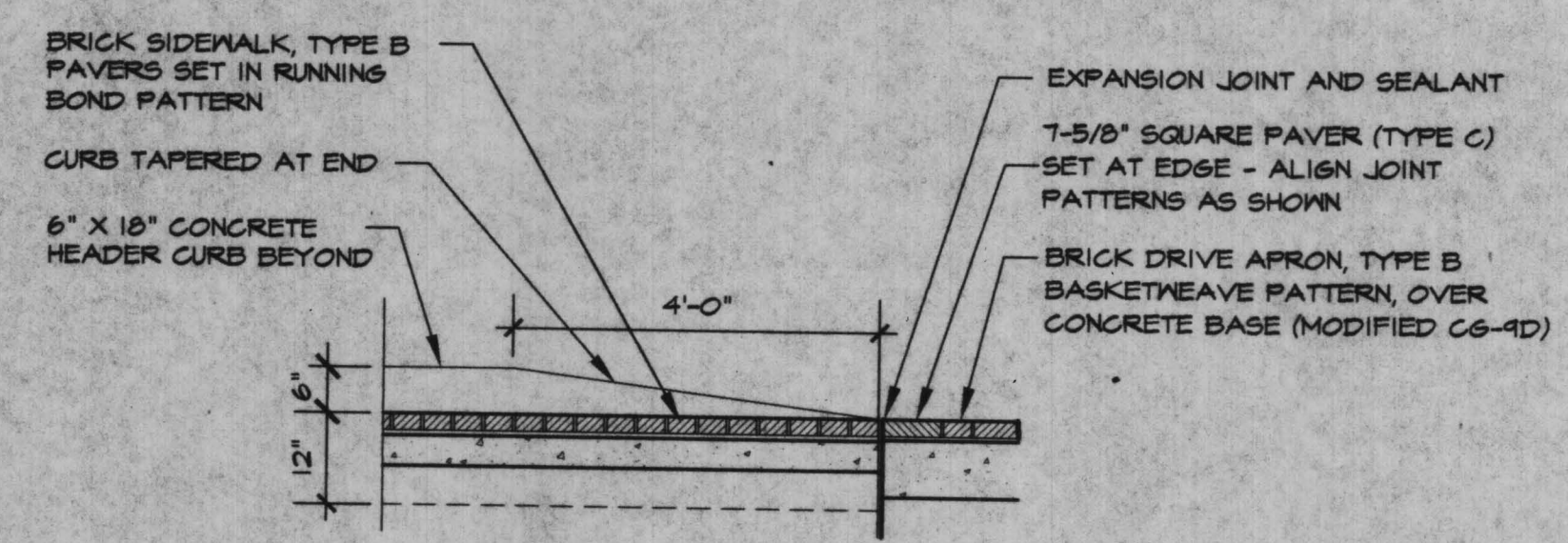
Project Number LSG # 98051  
Drawn By: LSG  
Checked By: MG  
Sheet No. L-17



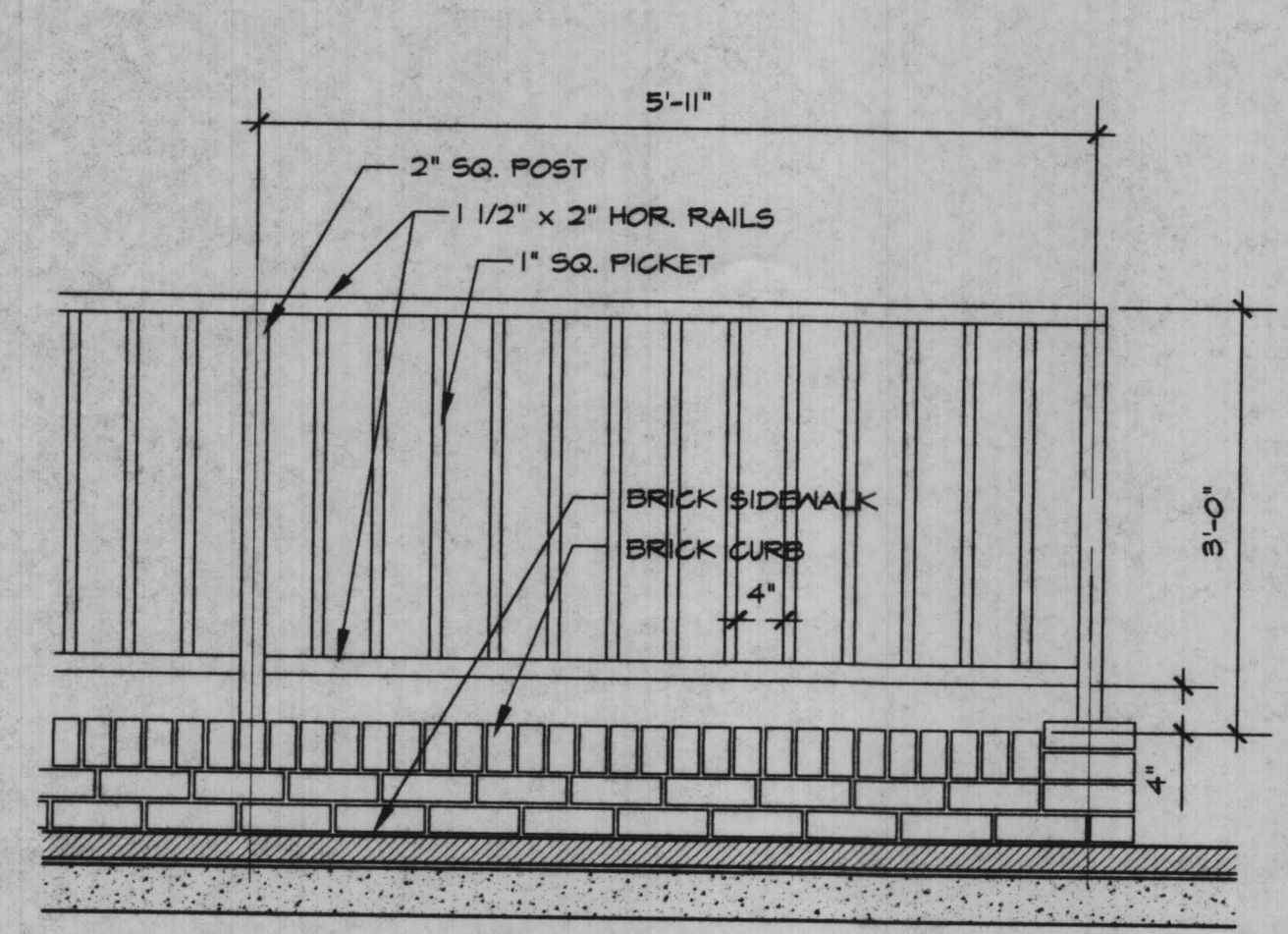
1 BRICK CURB W/ CONCRETE CURB  
SCALE: 1/2"=1'



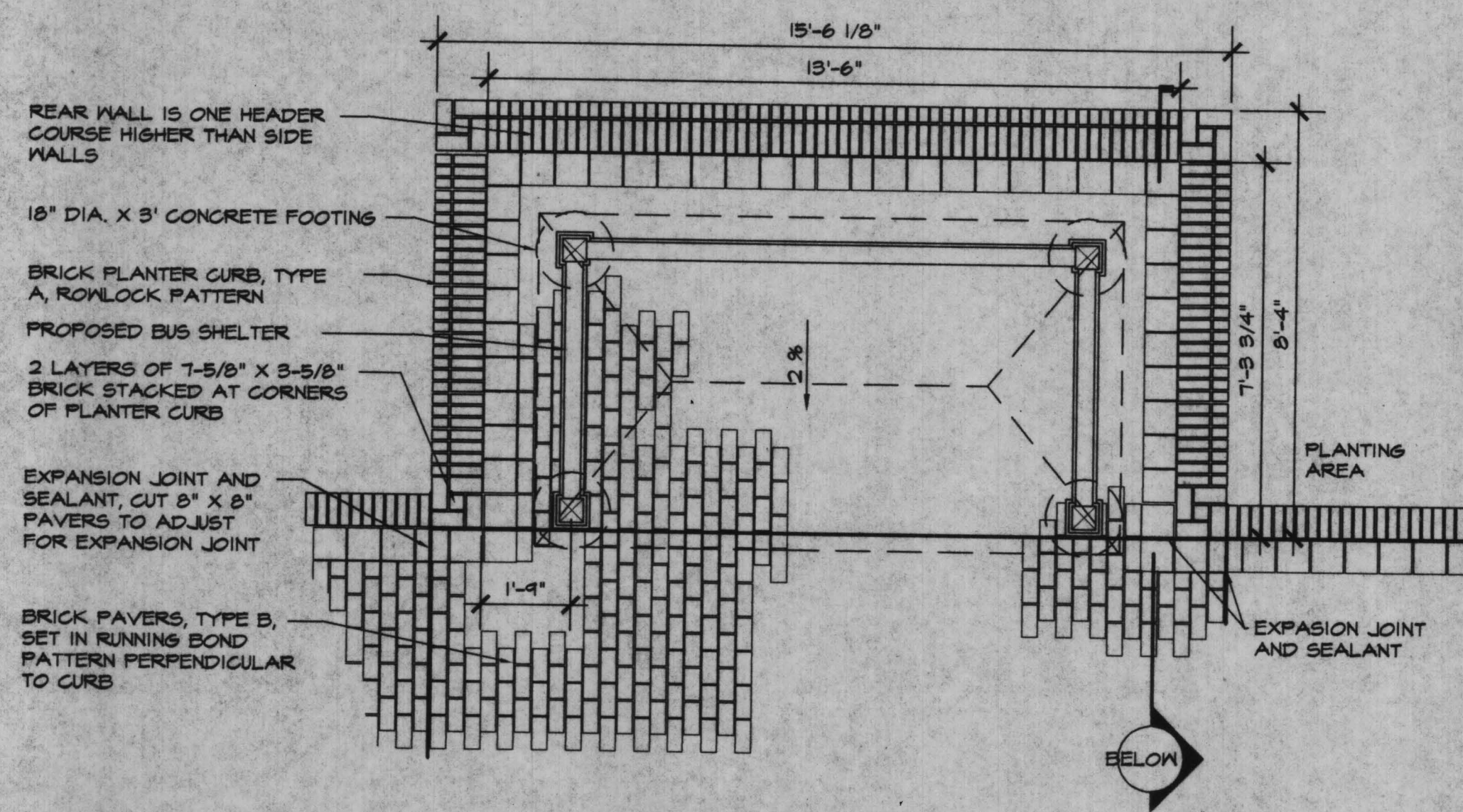
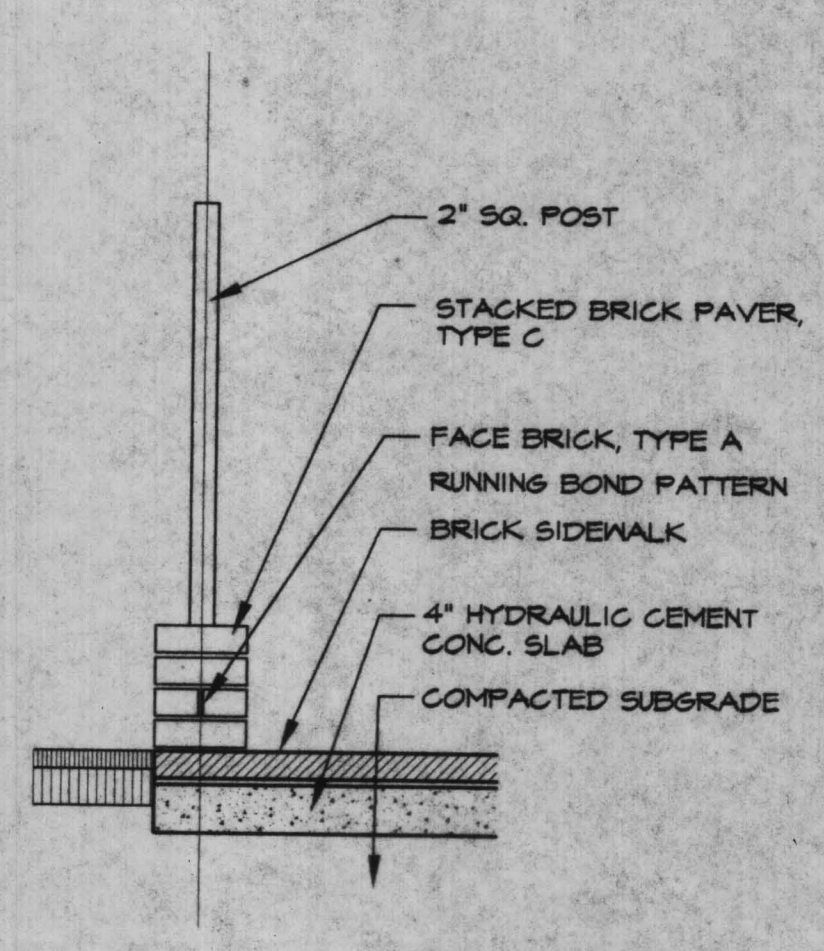
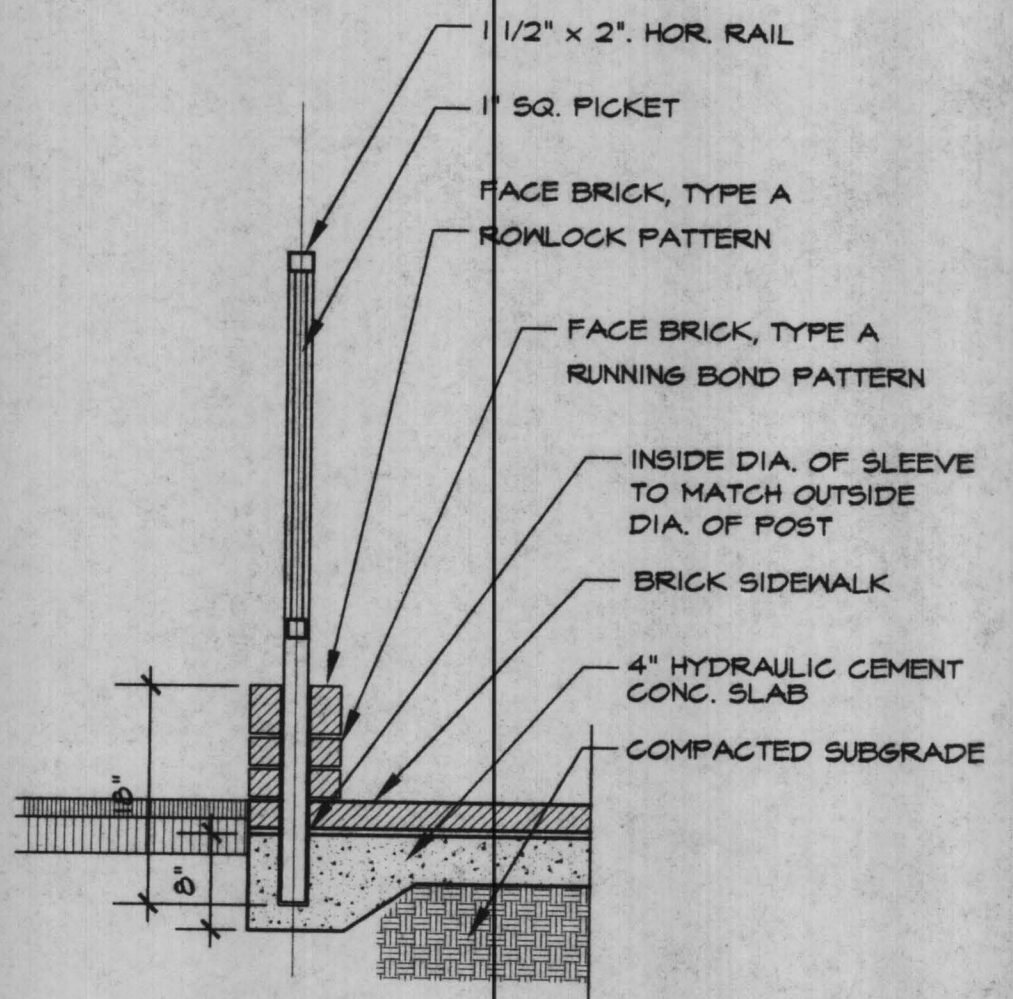
2 TAPERED BRICK CURB  
SCALE: 1/2"=1'



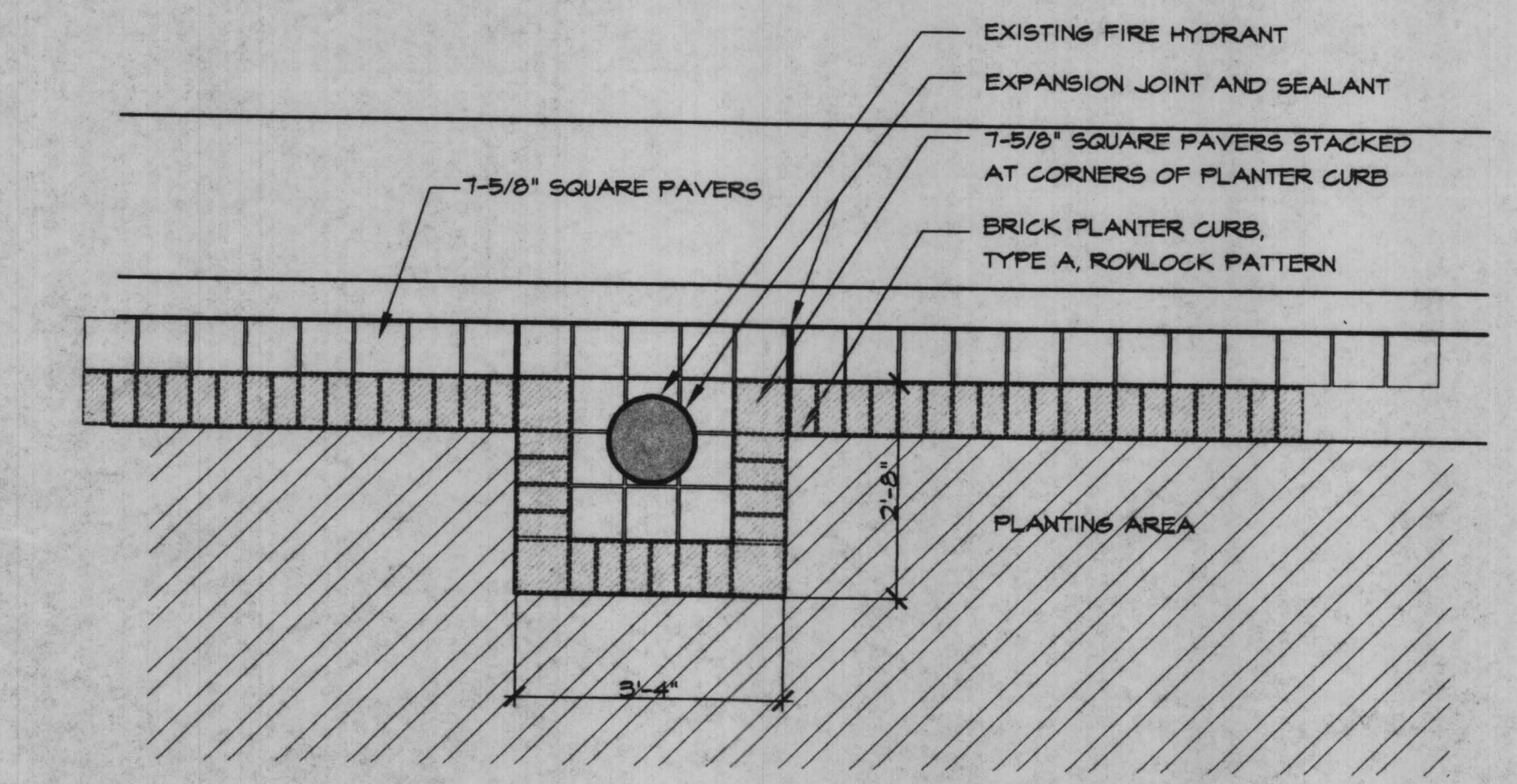
3 TAPERED CONC. CURB  
SCALE: 1/2"=1'



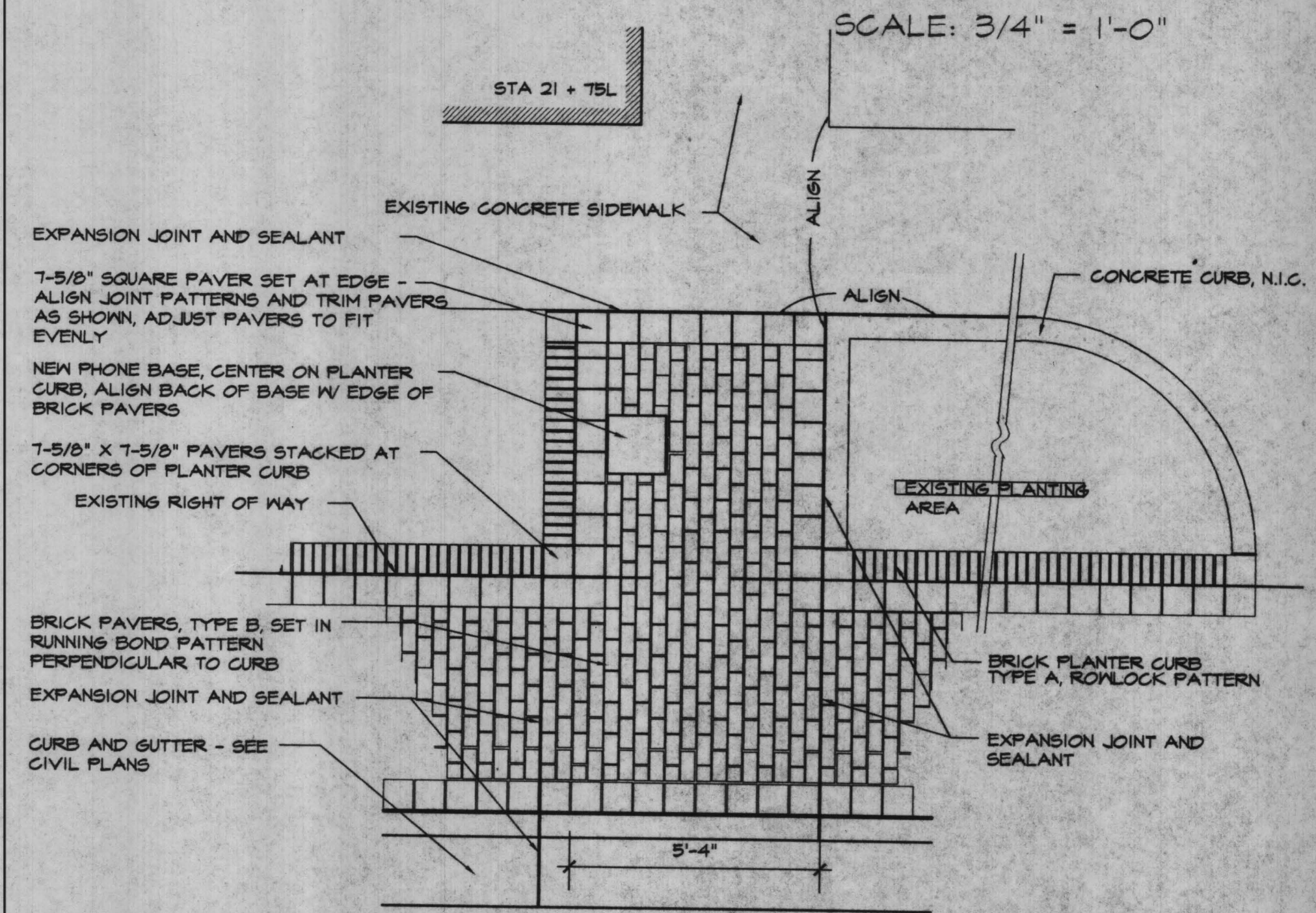
4 CURB RAIL



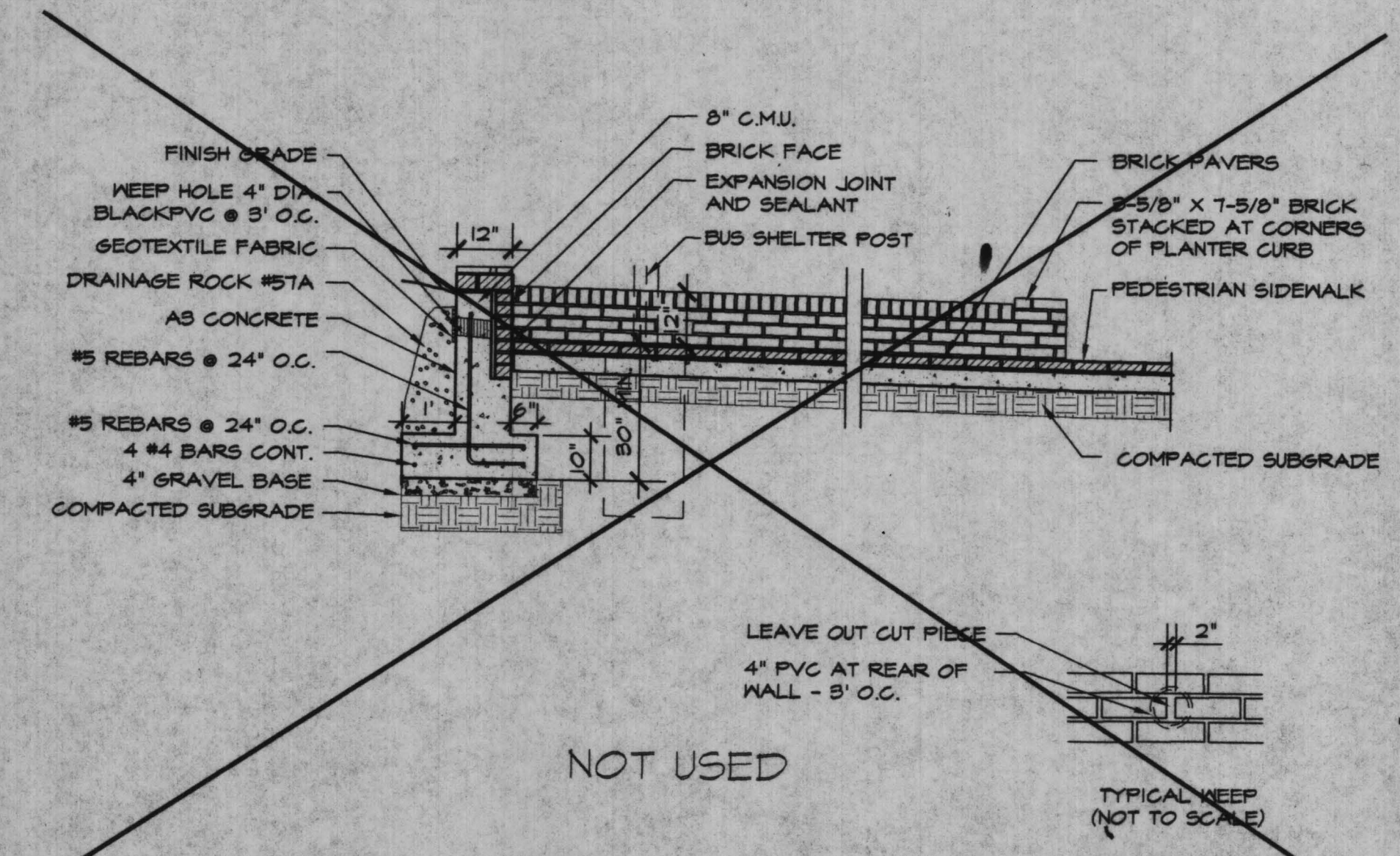
USE THIS DETAIL ONLY WHEN BUILDING BRICK PATIO AND LOCATING BUS SHELTER



8 PLANTER DETAIL - MAPLE AVENUE STA. 13+05R  
SCALE: 1/4"=1'



9 PLANTER DETAIL - STA. 21+75L  
SCALE: 3/8"=1'



10 BUS SHELTER PLANTER - STA. 11+00L  
SCALE: 3/8"=1'



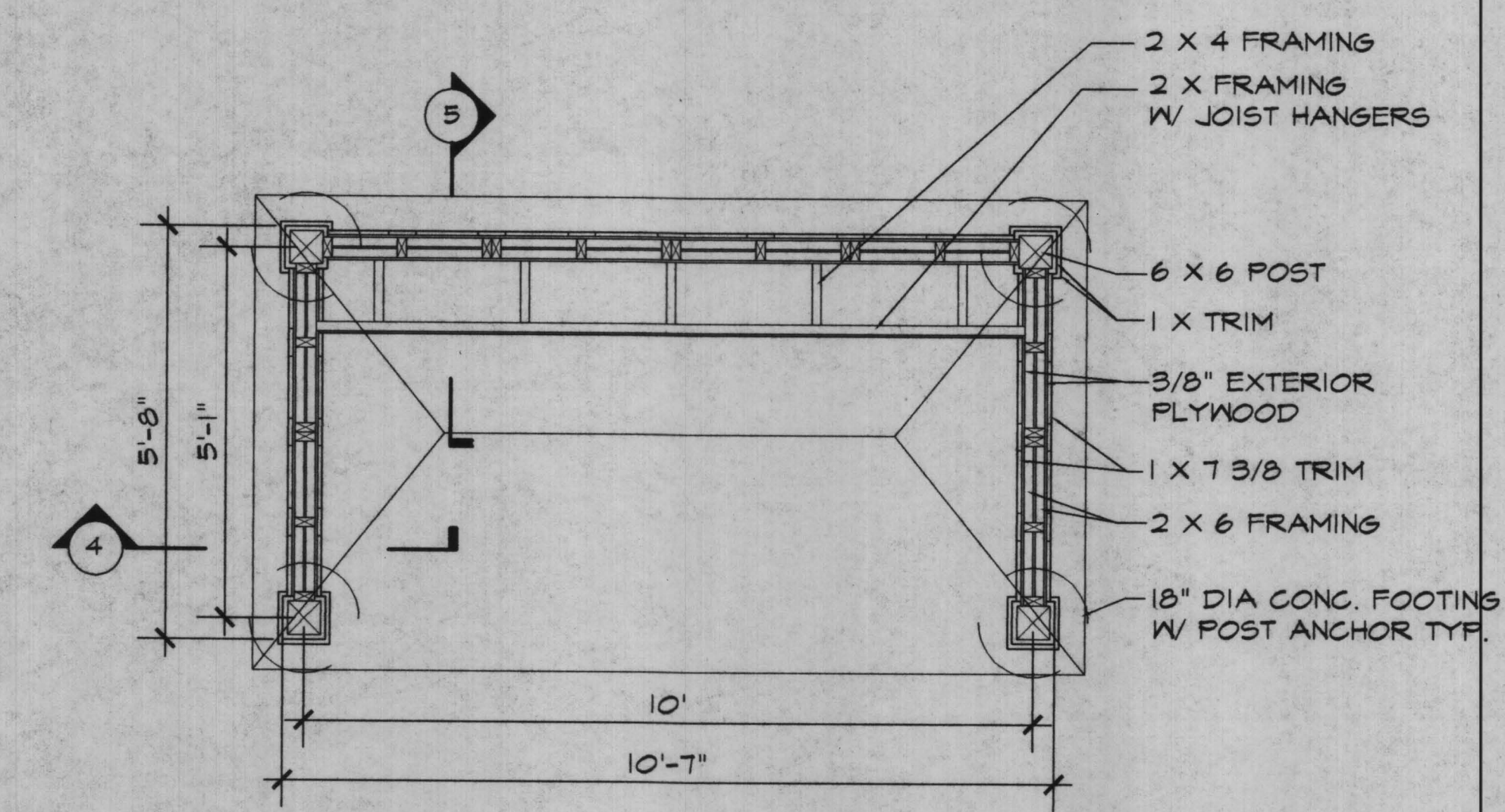
REVISIONS

No.	Description	Date
	BID SET	04/08/98
	95% REVIEW	01/19/98
	TOWN REVIEW	12/08/97
	UTILITY REVIEW	9/30/97
	50% SUBMISSION	05/97

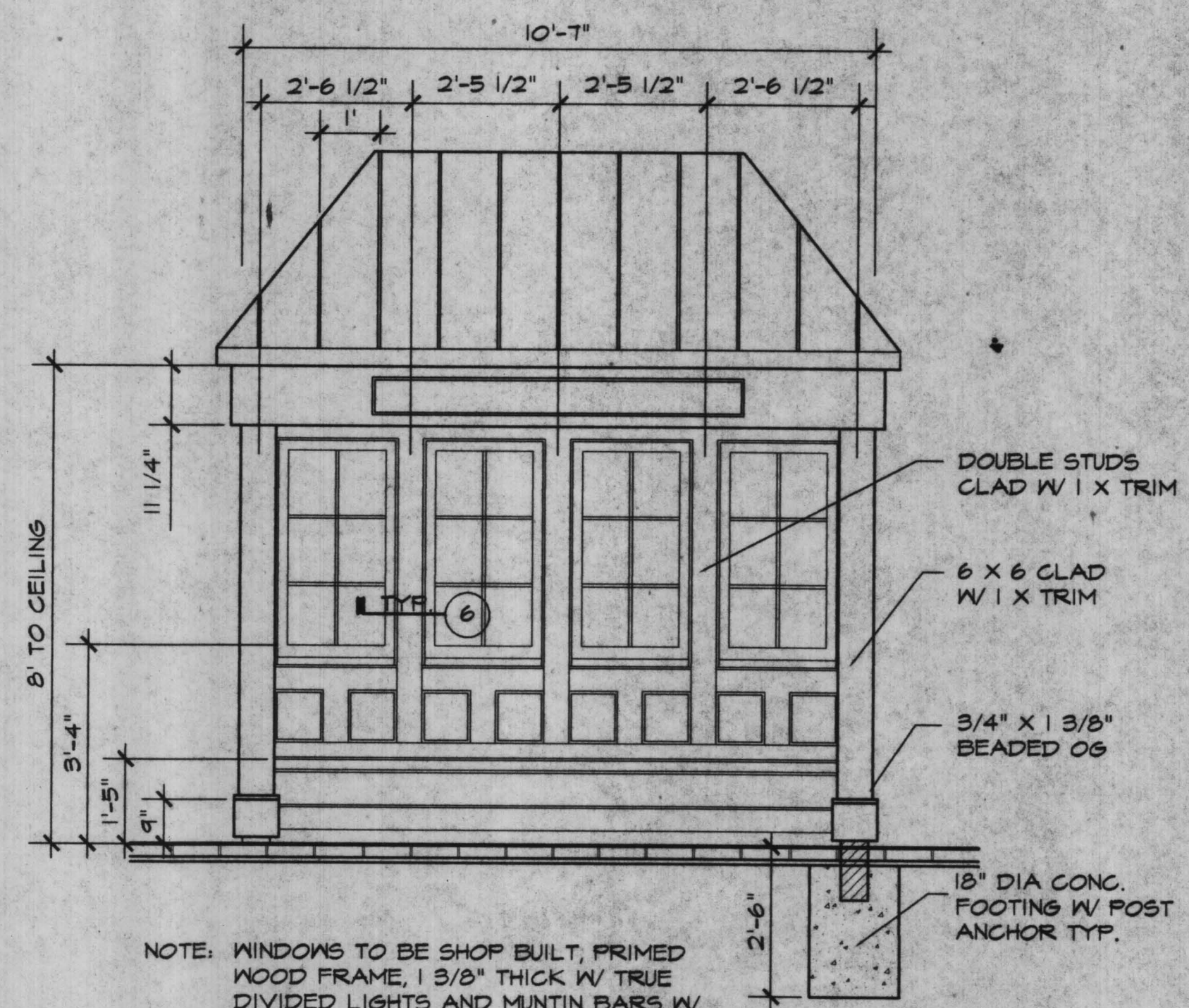
**HARDSCAPE  
DETAILS  
- BUS SHELTER**

Drawing Title

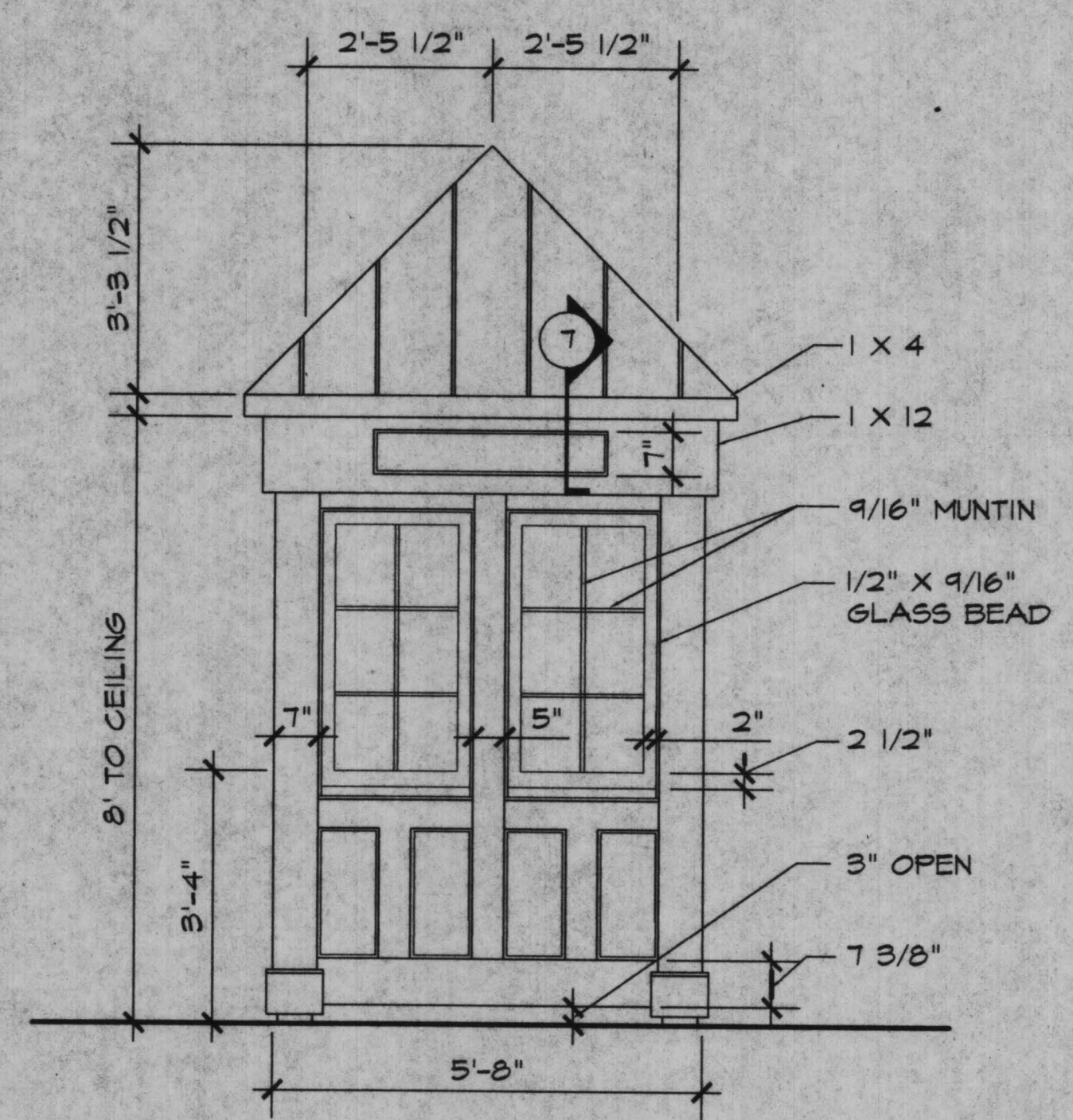
Project Number	LSG # 96051
Drawn By:	LSG
Checked By:	MG
Sheet No.	L-18



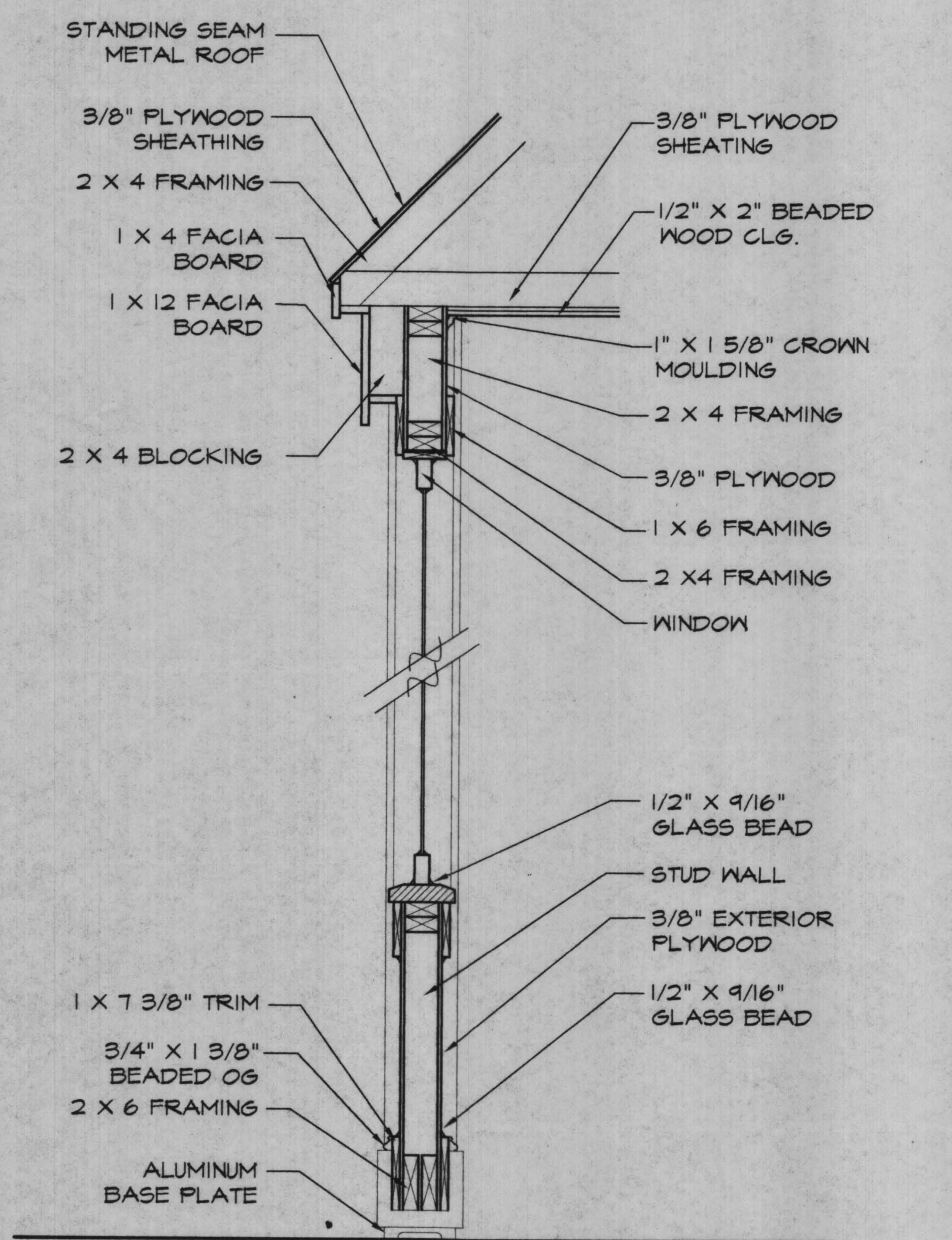
1 PLAN SCALE: 1/2" = 1'-0"



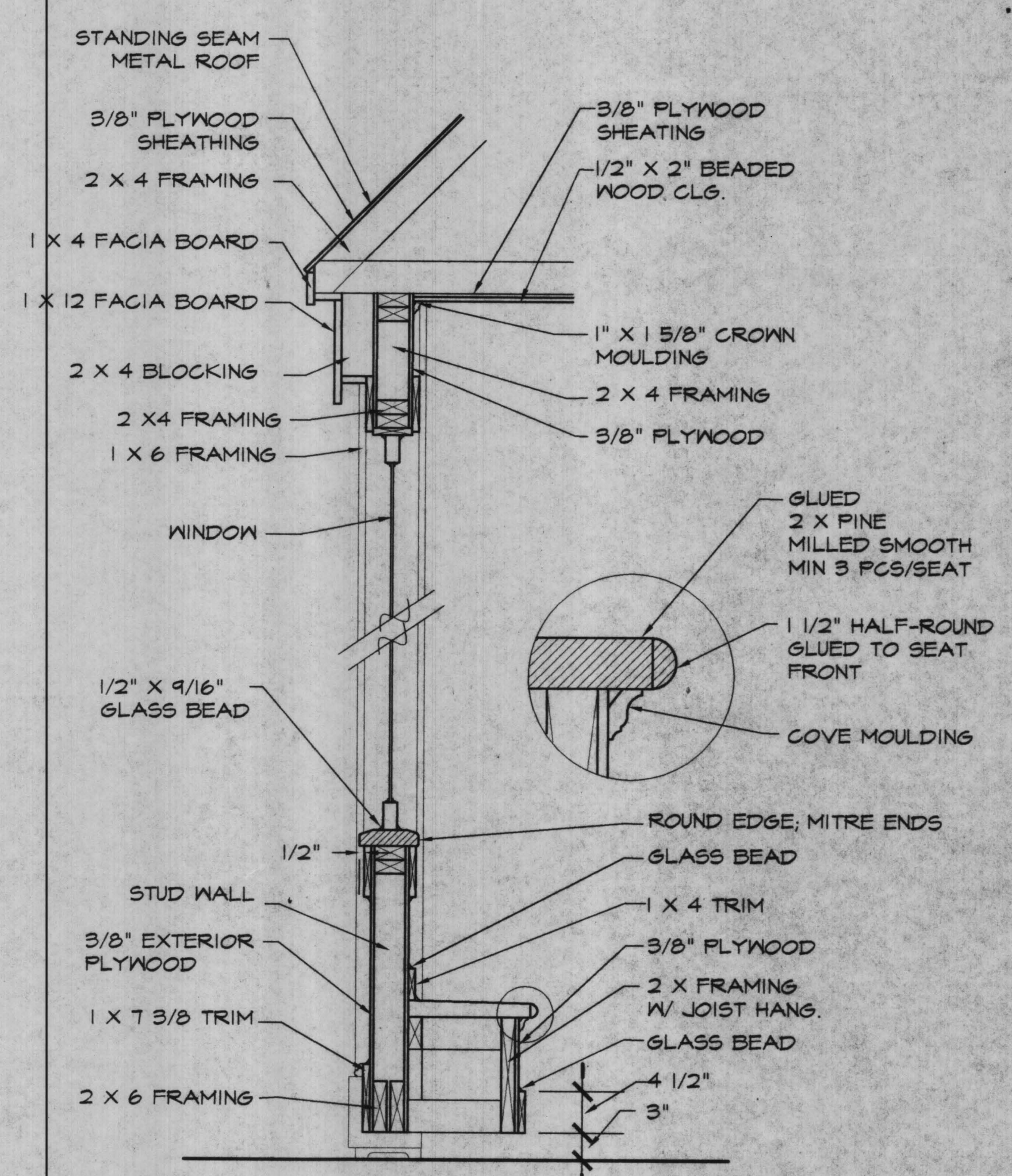
2 FRONT ELEVATION SCALE: 1/2" = 1'-0"



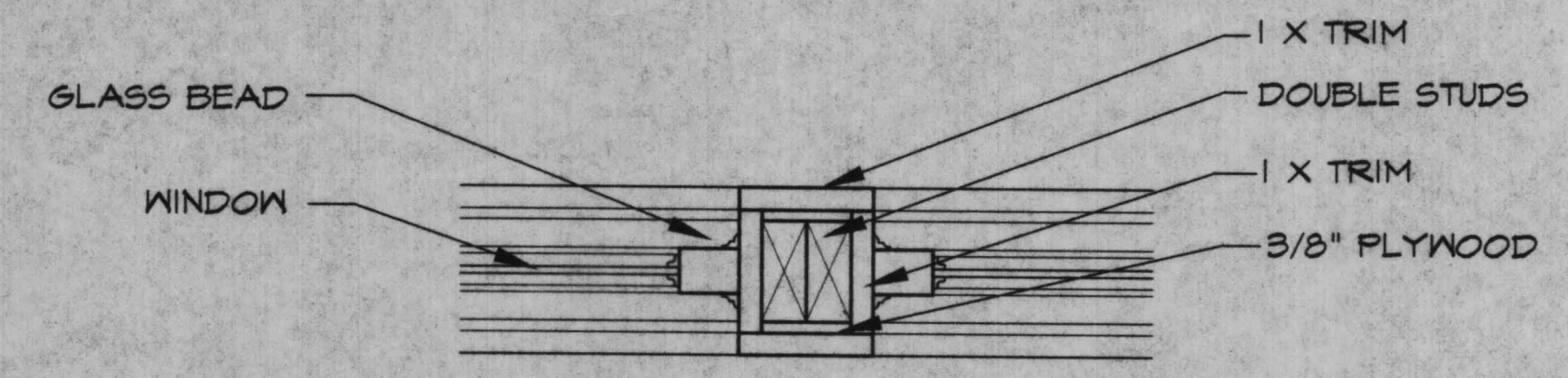
3 SIDE ELEVATION SCALE: 1/2" = 1'-0"



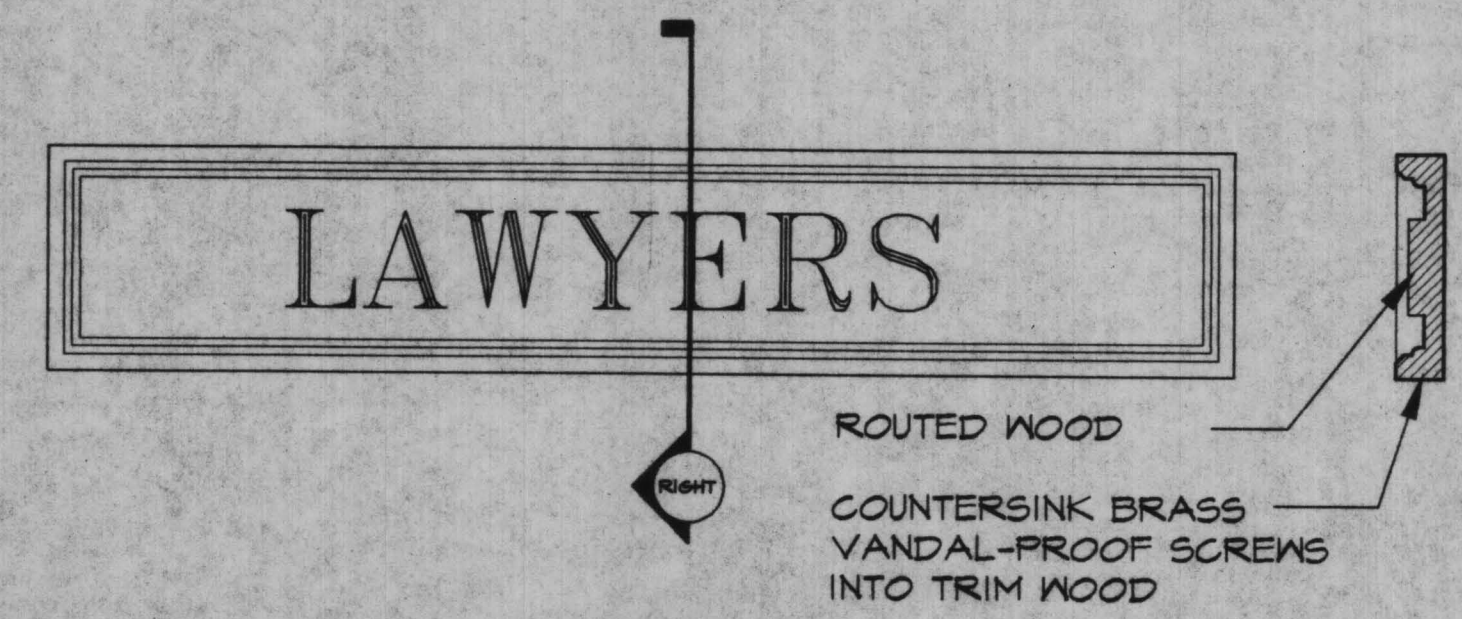
4 WALL SECTION SCALE: 1" = 1'-0"



5 SECTION THROUGH BENCH SEAT SCALE: 1" = 1'-0"



6 DOUBLE STUD WALL SUPPORT SCALE: 2" = 1'-0"



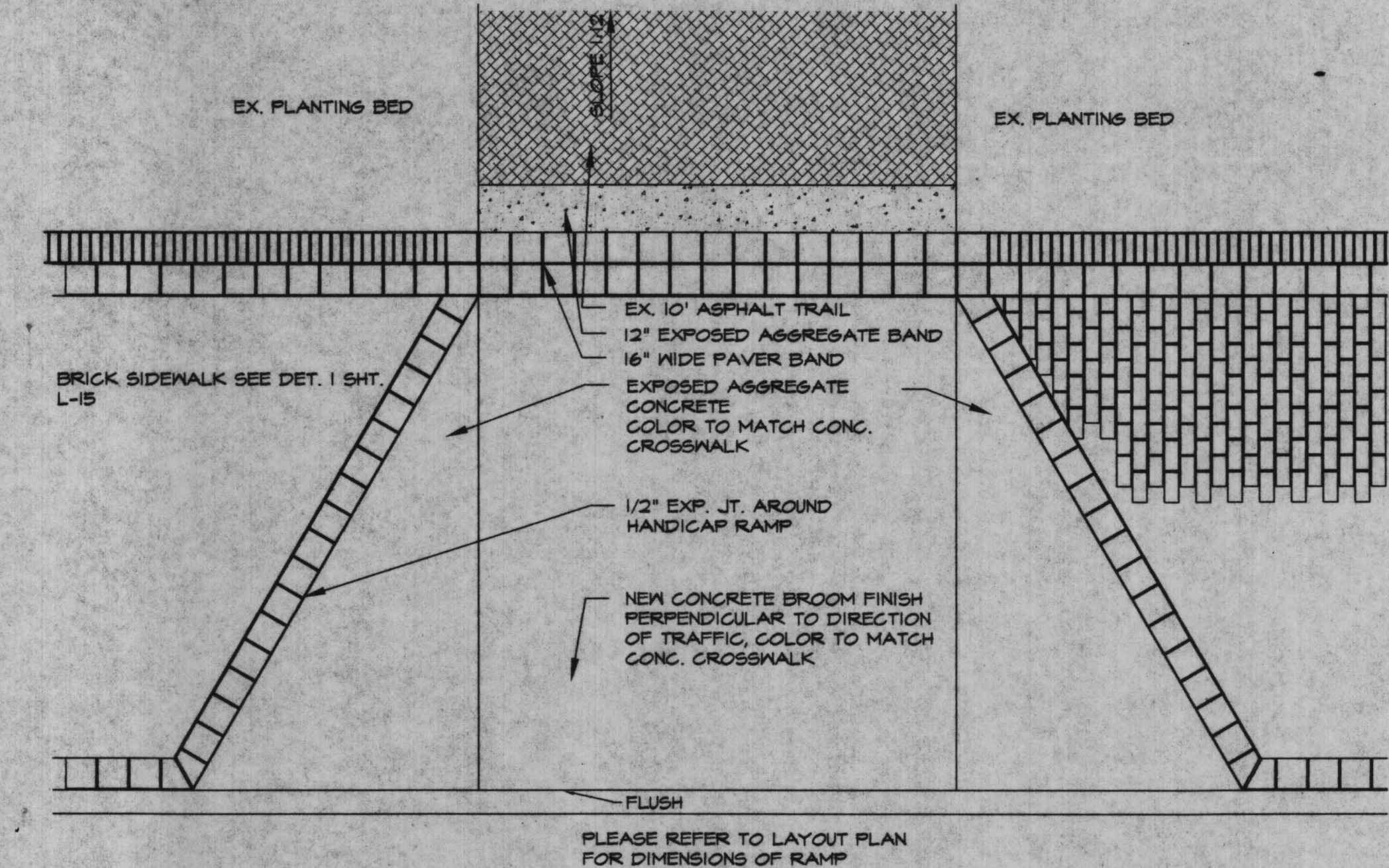
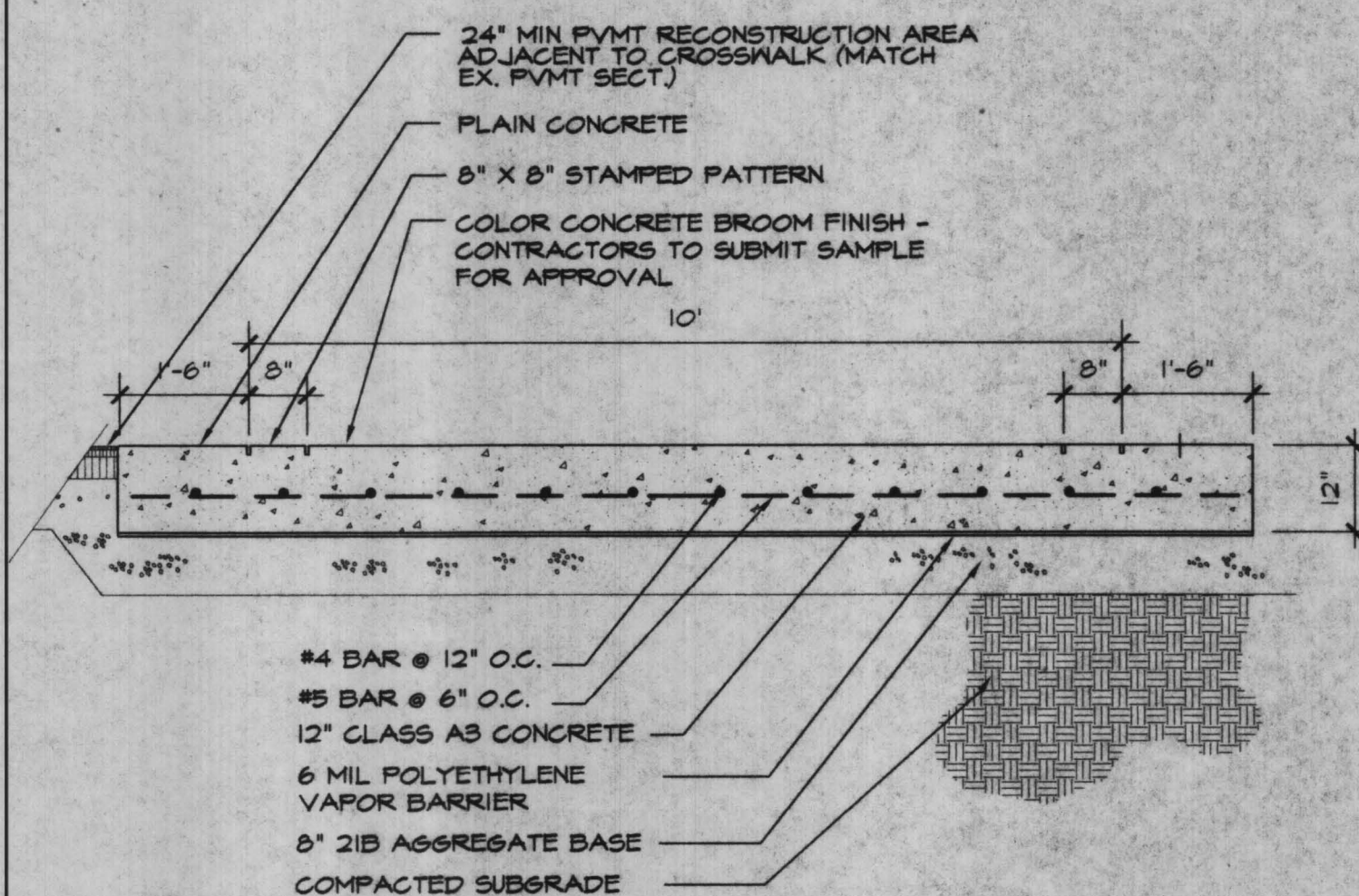
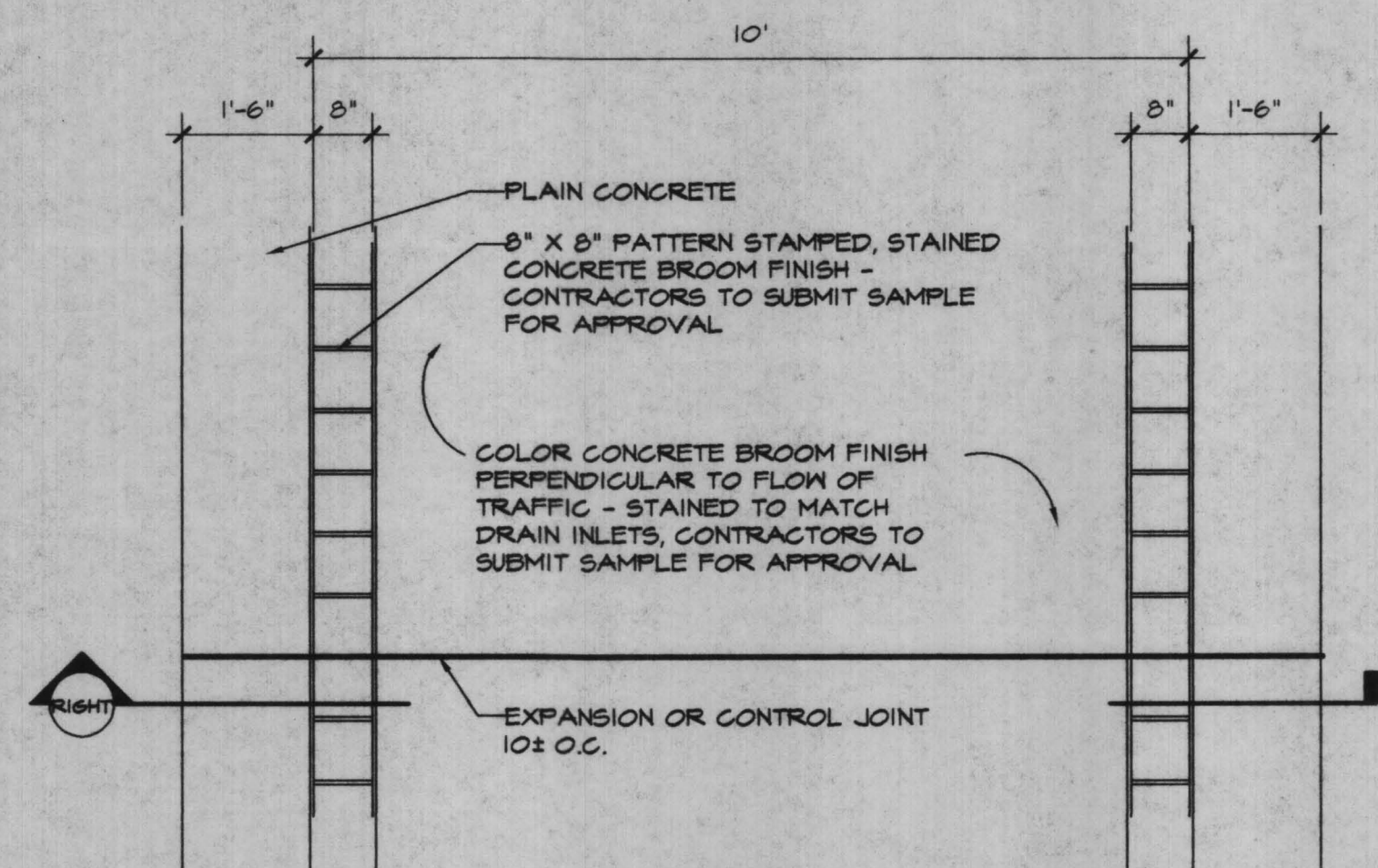
7 SIGNAGE DETAIL SCALE: 2" = 1'-0"

8 SIGNAGE SCHEDULE

LOCATION	FRONT MESSAGE	SIDE MESSAGE (2)
STA 11 + 20L	LAWYERS ROAD	LAWYERS RD.
STA 20 + 15L	CENTER STREET	CENTER ST.
STA 22 + 00R	PATRICK HENRY LIBRARY	LIBRARY
STA 27 + 00R	MILL STREET	MILL ST.

NOTE: SIGN BOARD TO BE ROUTED WOOD

8 SIGNAGE SCHEDULE



**LEWIS SCULLY ARCHITECTS GIONET**  
 8320 Old Courthouse Rd. Suite 120  
 Vienna, Virginia 22182  
 Tel. 703/821-2045, Fax. 703/448-0597



REVISIONS

No.	Description	Date
BID SET		04/08/98
95% REVIEW		01/19/98
TOWN REVIEW		12/08/97
UTILITY REVIEW		9/30/97
50% SUBMISSION		05/97

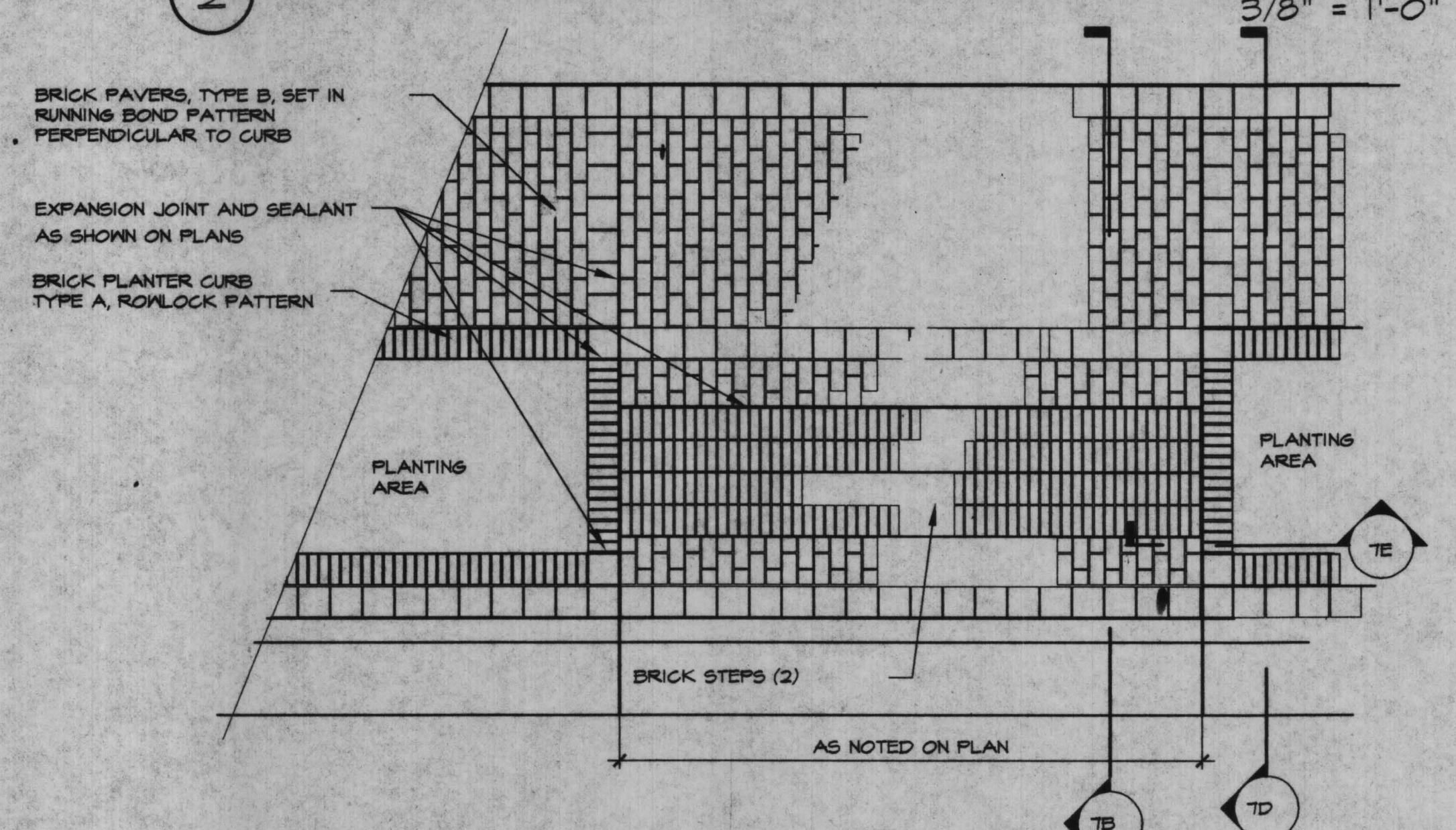
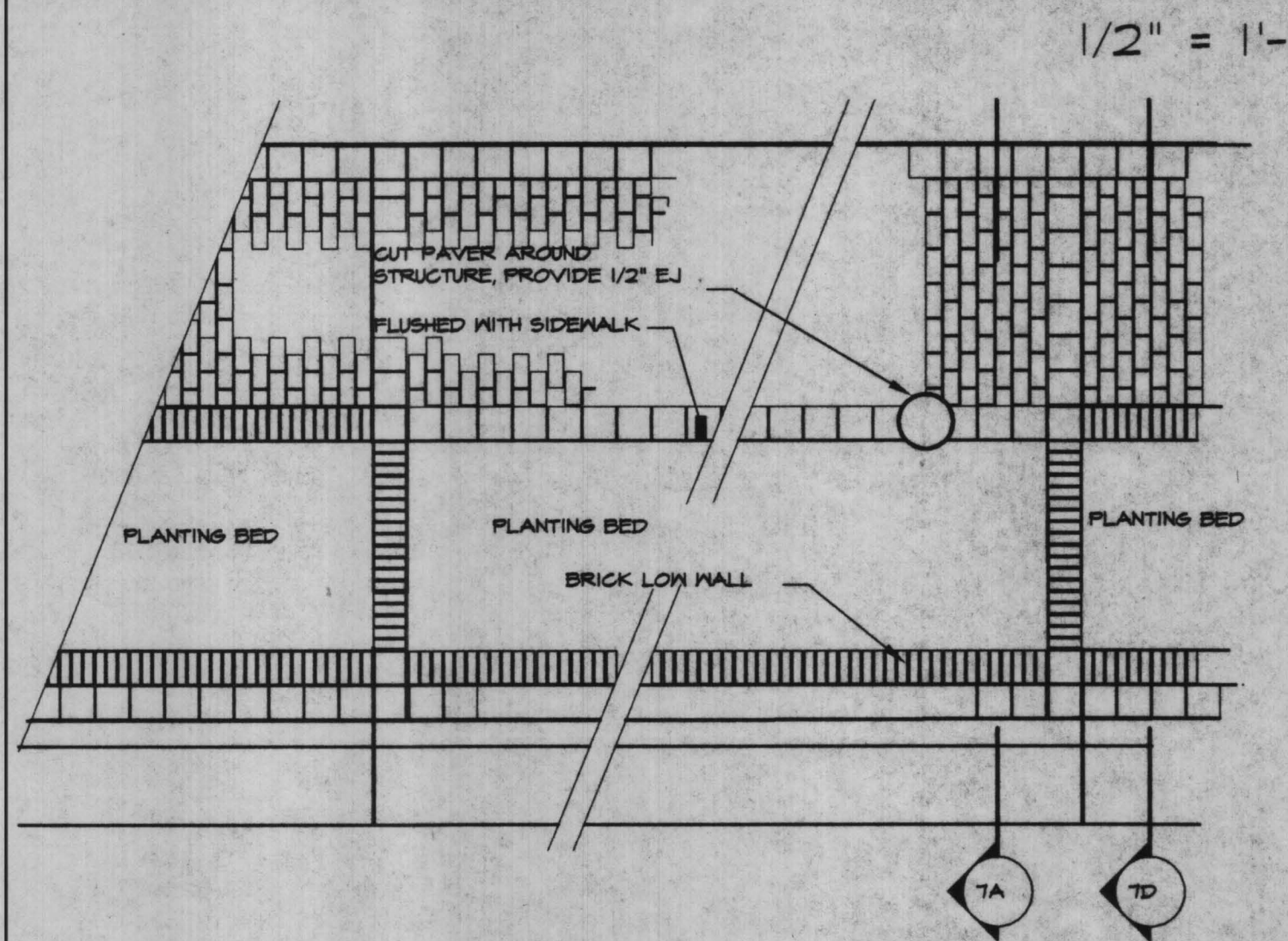
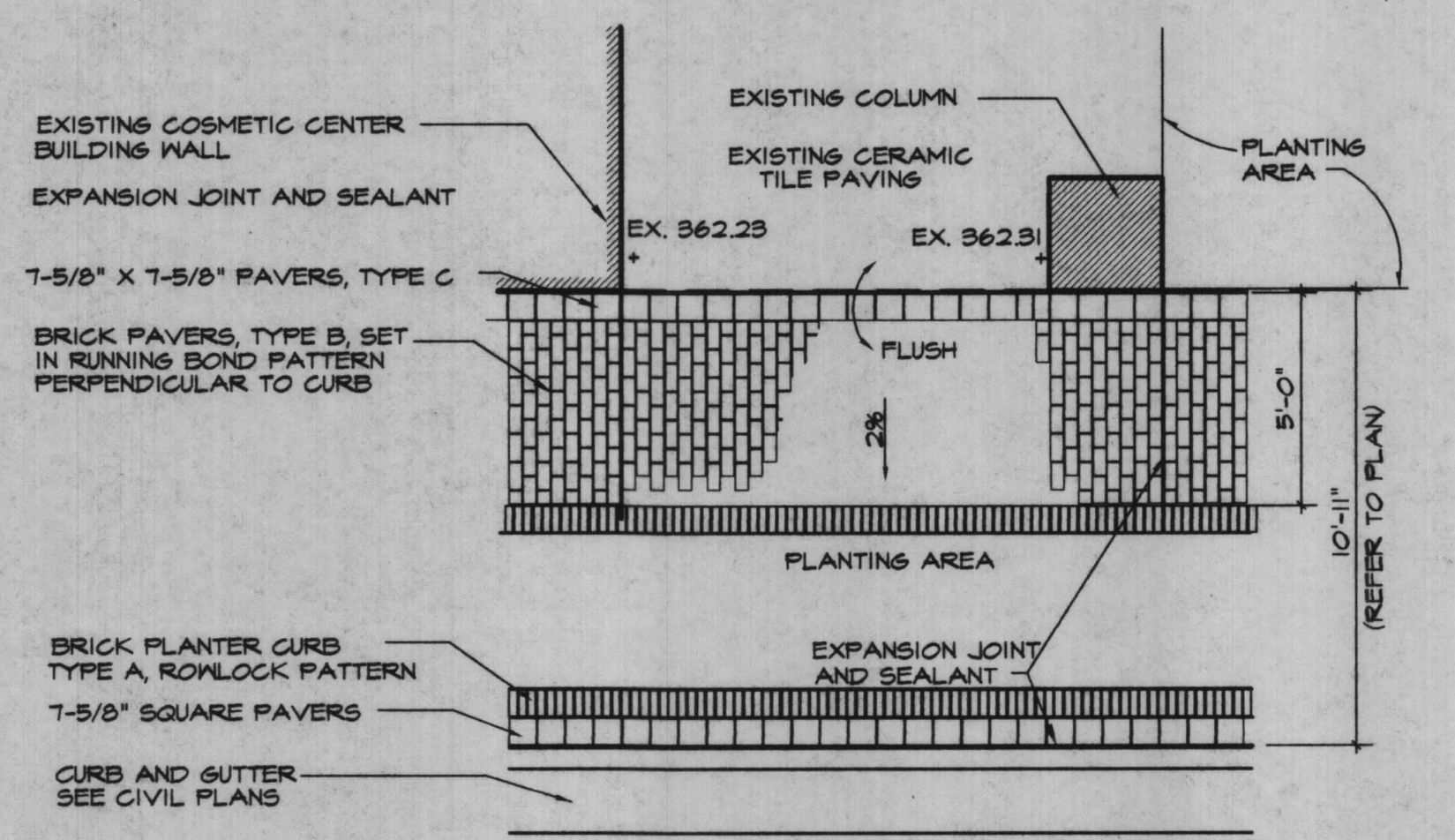
**HARDSCAPE DETAILS - CROSSWALKS AND PLANTERS**

Drawing Title

Project Number: LSC # 96051  
 Drawn By: LSG  
 Checked By: MG  
 Sheet No.: L-19

1 SOLID CONCRETE CROSSWALK AT THE W. & O. D. TRAIL

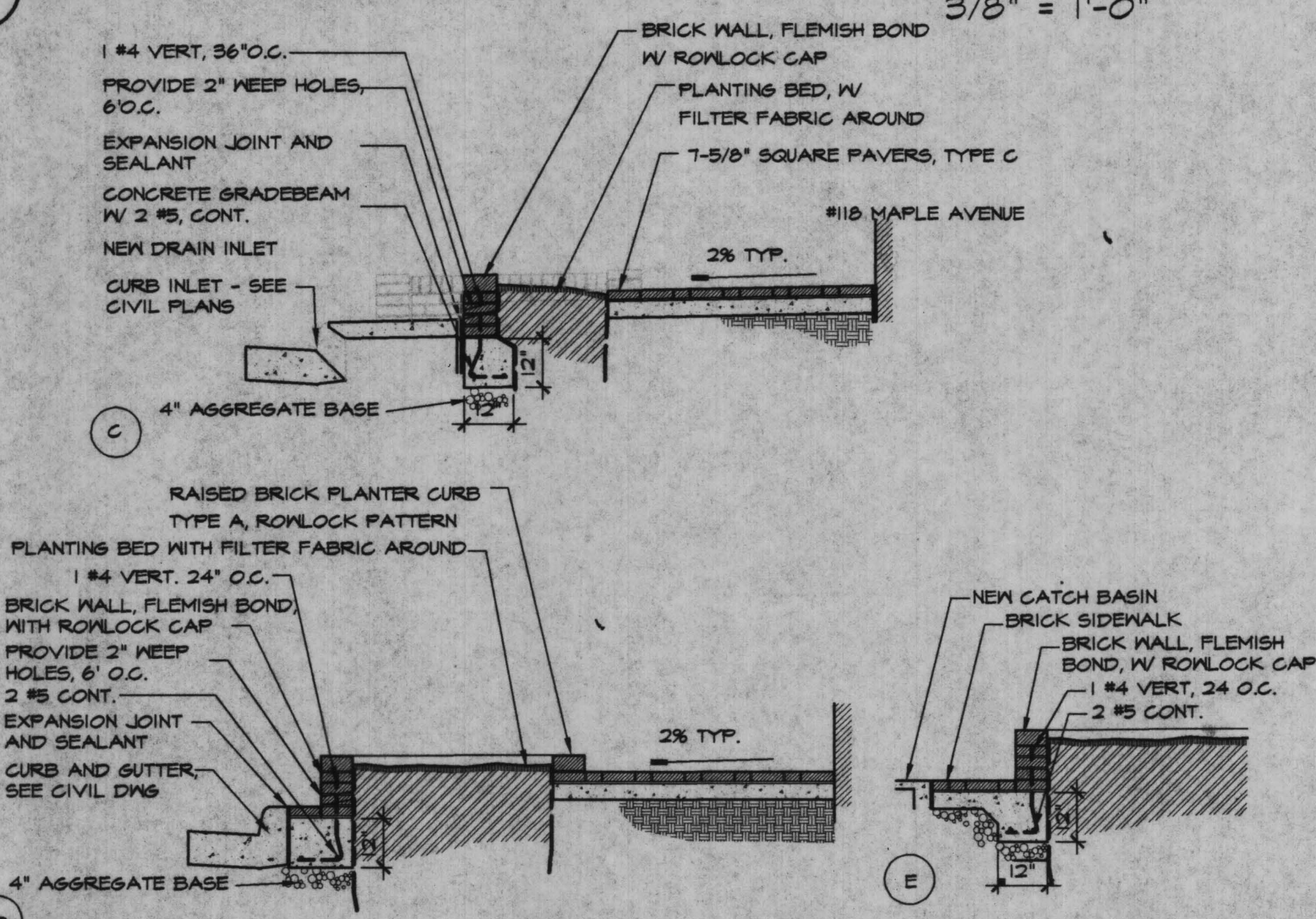
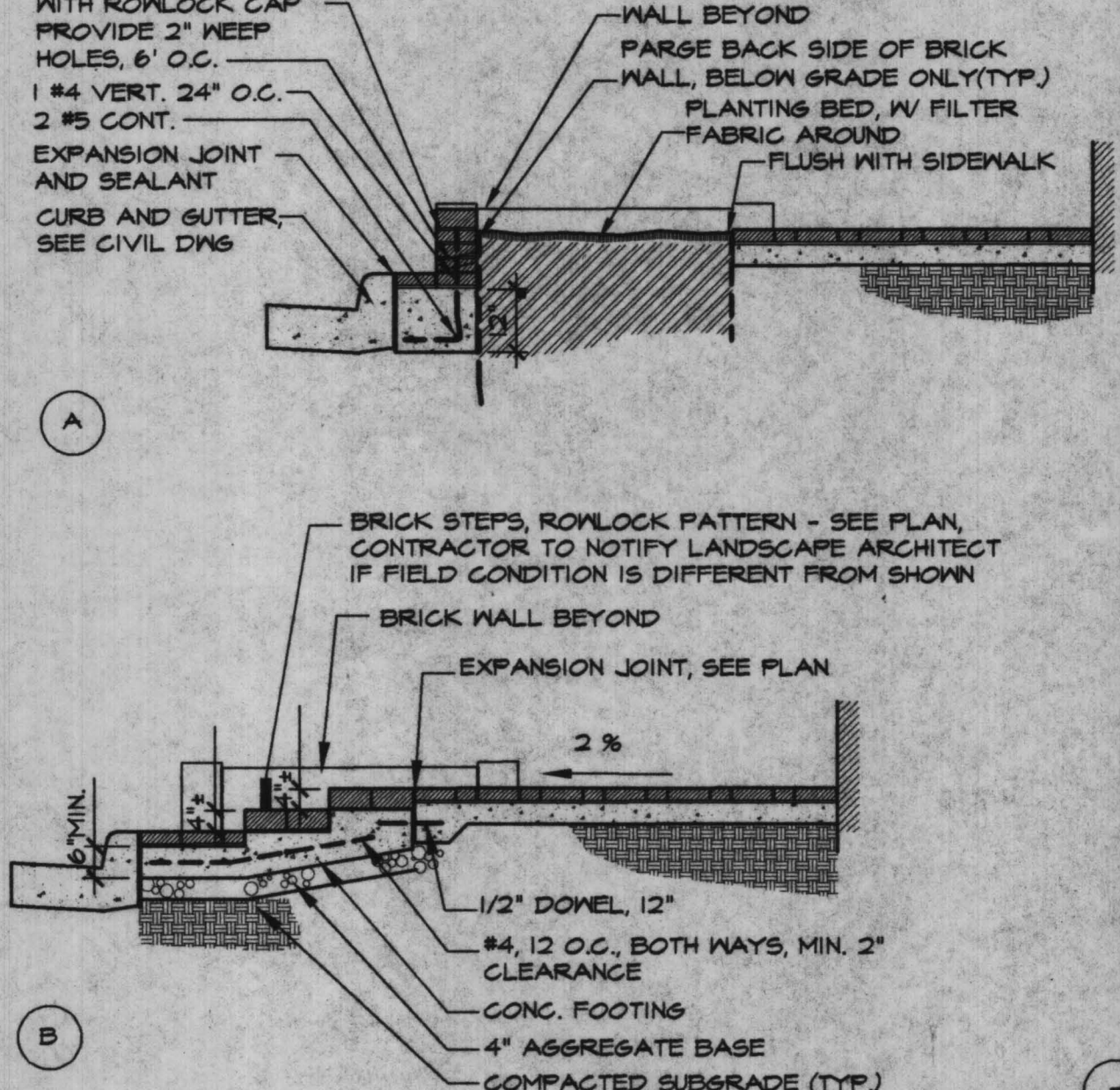
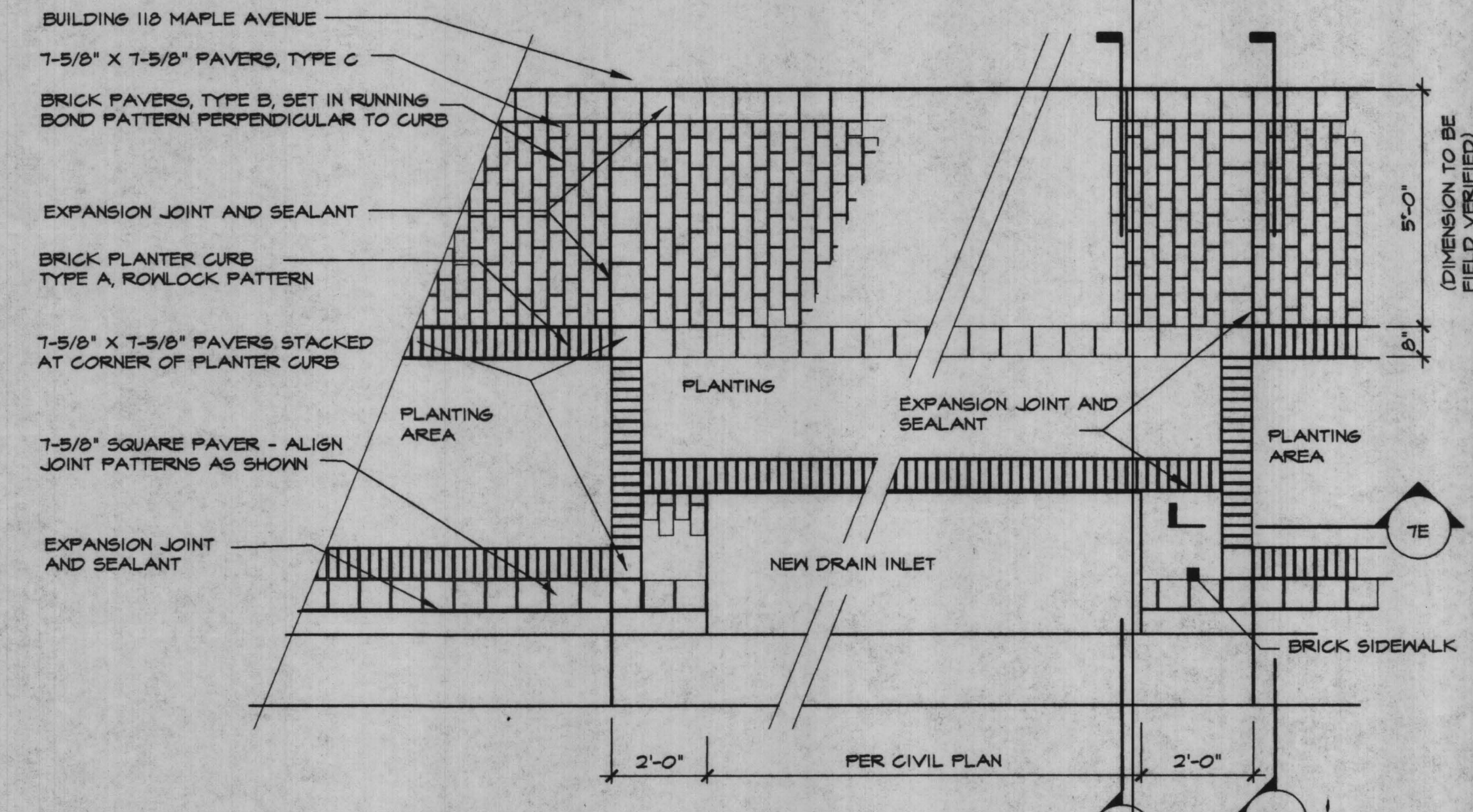
2 CURB RAMP AT W. & O. D. TRAIL



3 PLANTER DETAIL - STA. 13+75R

4 PLANTER DETAIL

5 PLANTER DETAIL



6 PLANTER DETAIL PLAN - STA. 16+50R

7 WALL SECTIONS

1/4" = 1'-0" 3/8" = 1'-0"